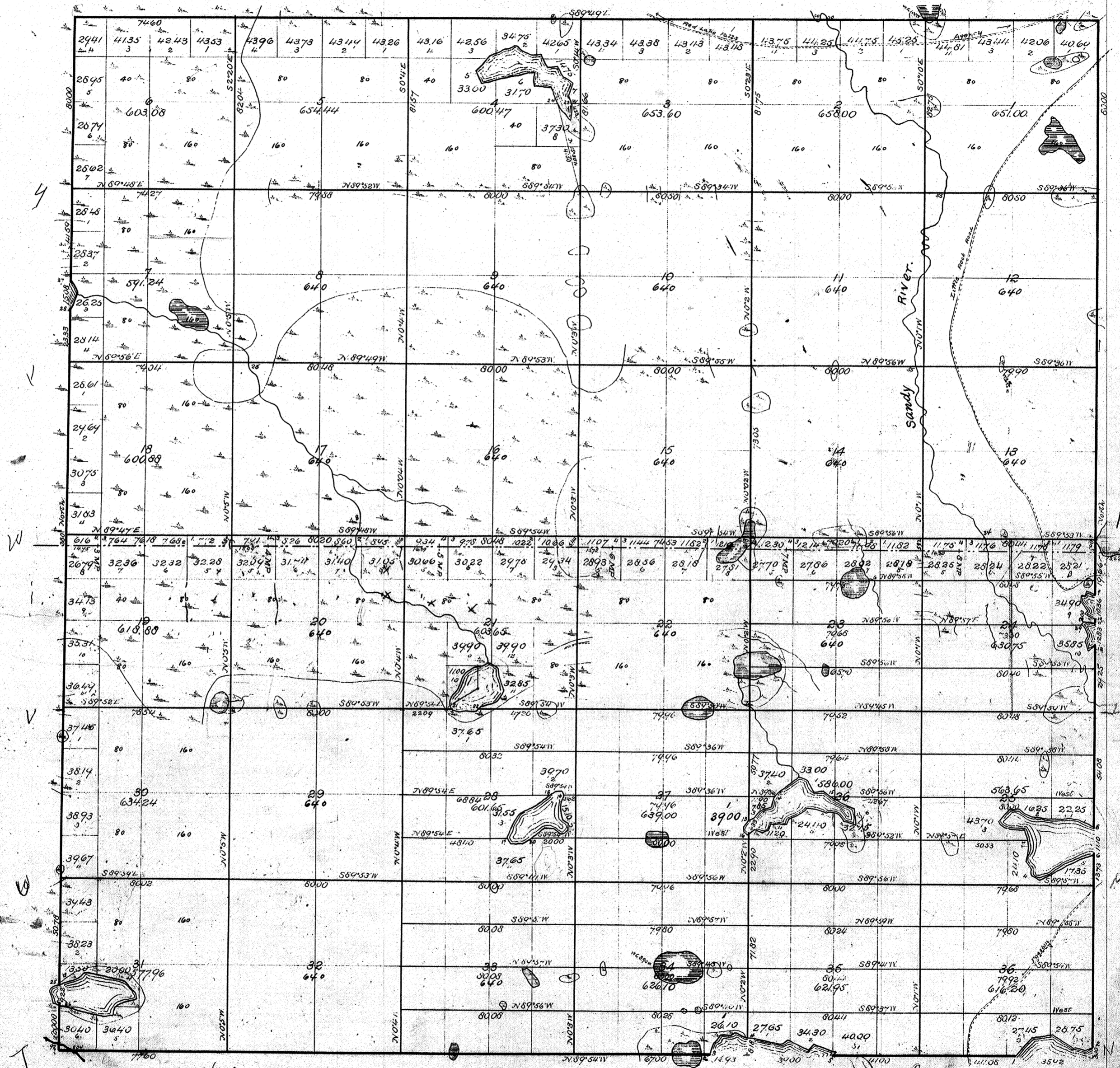


Township No 150 N Range No 36 W 5th Mer.



Surveyed in 1891 by Smith and Brownell
 Mean Declination 10'15" E

I certify that the above is a true copy of the
 original plat on file in this office,
 Surveyor General's Office,
 St. Paul, Minn. Mar. 27. 1904 U. S. Surv'r Gen'l.

150-36-5

United States of America



Mrs. Virginia Holm
I, ~~Mrs. Virginia Holm~~, Secretary of State of the State of Minnesota,
do hereby certify that the annexed is a full, true and correct photo-
copy of

that part of the original U.S. Gov't
plat pertaining to Section No. 36,
Twp. No. 150, N of Rge No. 36 W. 5th
principal meridian, Minnesota

as the same appears of record in this office, and of the whole thereof.

In Testimony Whereof, I have hereunto
set my hand and affixed the Great Seal of
the State, at the Capitol in St. Paul, this

13th day of October

A. D. 19 52

Mrs Virginia Holm
Secretary of State

Received by Mrs. Virginia Holm, Secretary of State, at St. Paul, Minn., Oct. 13, 1952.
James Conroy