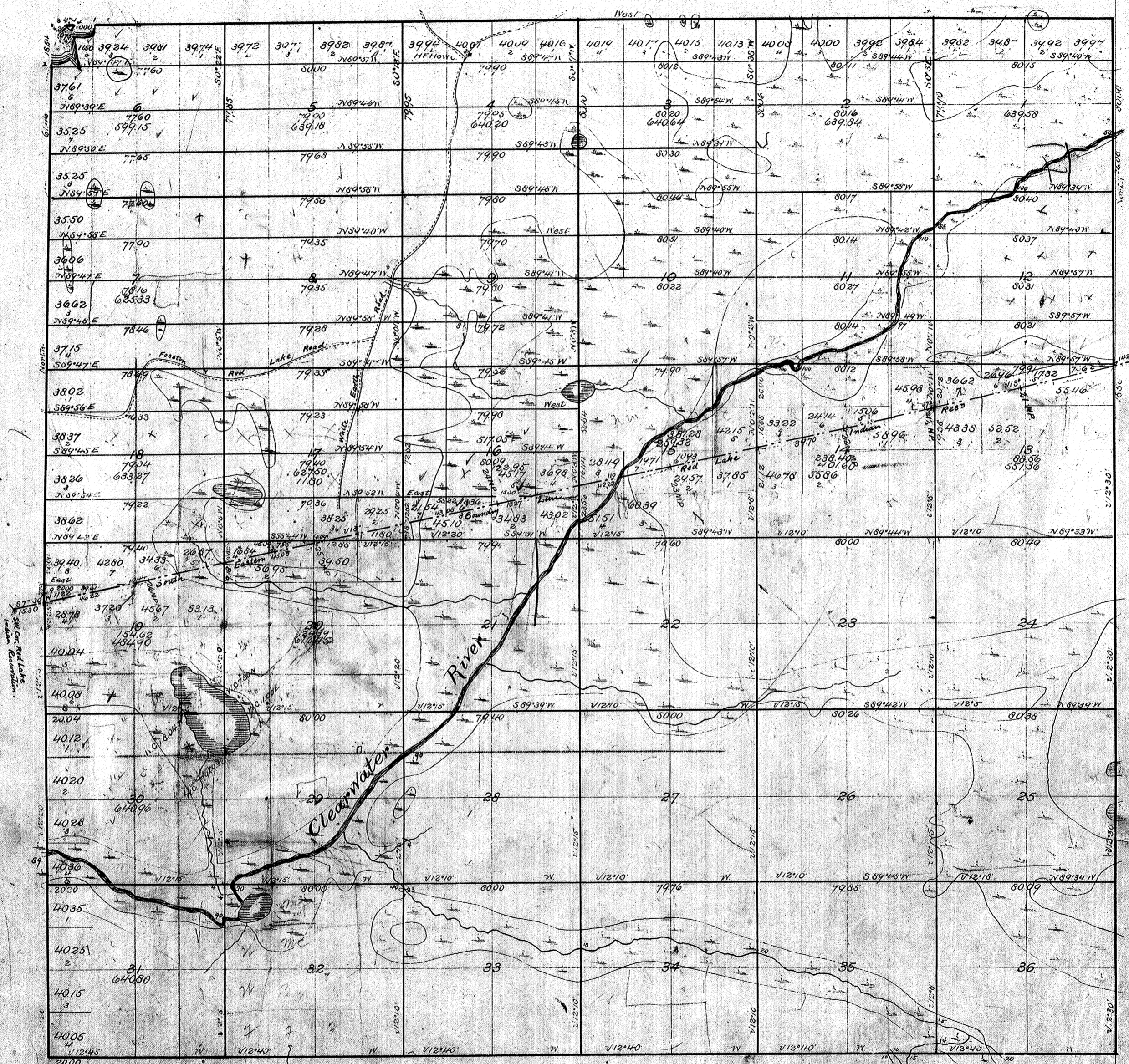


Township No 147N Range No 37W. 5th Mer.



Surveyed in 1884 by O. L. Hamer,
 Resurveyed in 1891 by Hamer and Goodnow.
 Mean Declination 11° 30' E.

I certify that the above is a true copy of the
 original plat on file in this office.
 Surveyor General's Office, *O. L. Hamer*
 St. Paul, Minn. Mar. 27, 1908 U. S. Surv'r Gen'l.