

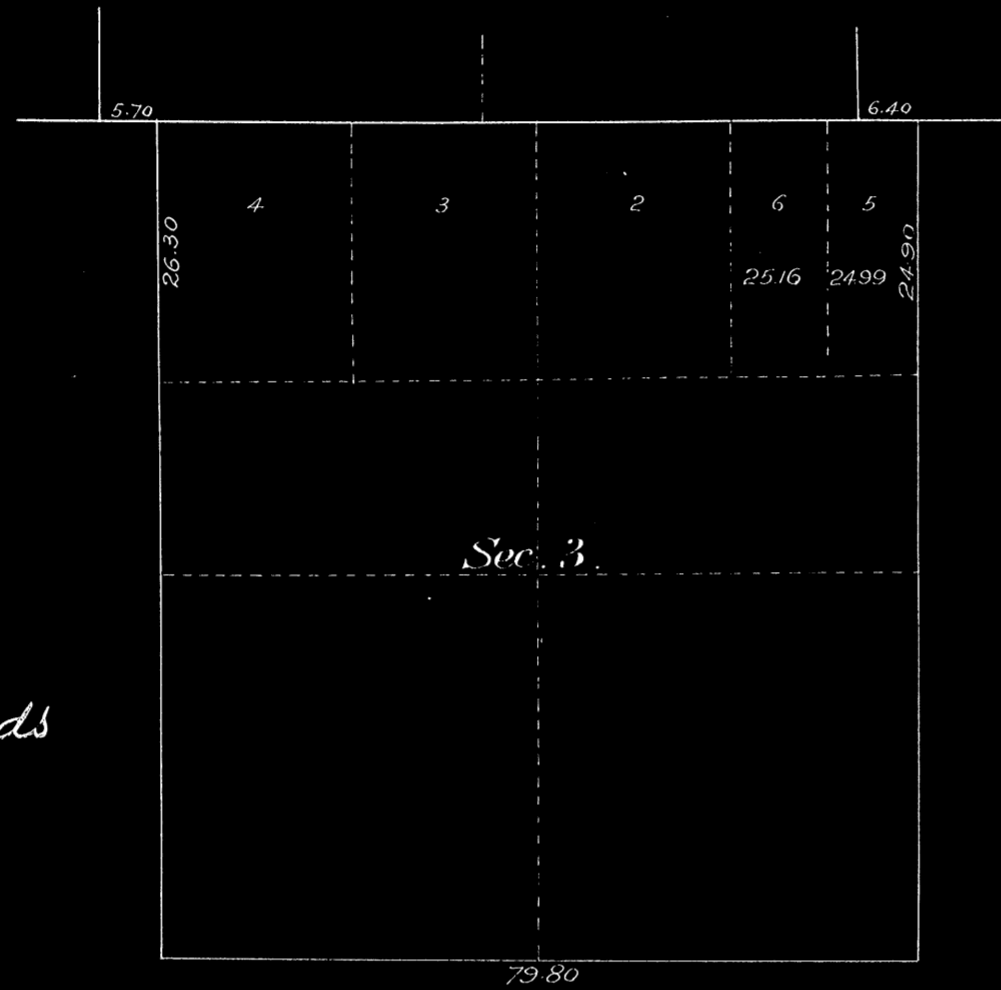
SUPPLEMENTAL PLAT

OF

SEC. 3, T. 146 N., R. 38 W., 5TH P.M.,

MINNESOTA.

SCALE: 20 CHS. TO AN INCH.



Note: This supplemental plat is prepared to furnish a proper description of Allotment No. 2394, White Earth Schedule approved April 2, 1908.

68753

Office of the Register, Deeds
County of Goodwater, Minn.

I do hereby certify that the within
instrument was filed in this
office for record on the 5th day of
July, 1950, at two o'clock P.M.

H. Staetson
Register of Deeds

Department of the Interior,
General Land Office,
Washington, D.C., Aug 30, 1912.

I hereby certify that the above supplemental plat is prepared under authority of Section 2219 of the U.S. Revised Statutes, and correctly represents the subdivision by protraction of Lot No. 1 in Section No. 3 of Township No. 146 North, of Range No. 38 West of the 5th Principal Meridian, Minnesota, represented on the plat of said township approved October 2, 1873, into its technical east and west halves now designated as Lots 5 and 6 in said section, and is strictly conformable to the field notes of survey of said section and township now on file in this office.

W. Proudfoot
Acting Commissioner and ex-officio
U.S. Surveyor General for Minnesota.