

Certificate of Survey

Copley Township
Township 147 North, Range 37 West,
Clearwater County, Minnesota.

T143N R37W
HOL.ST

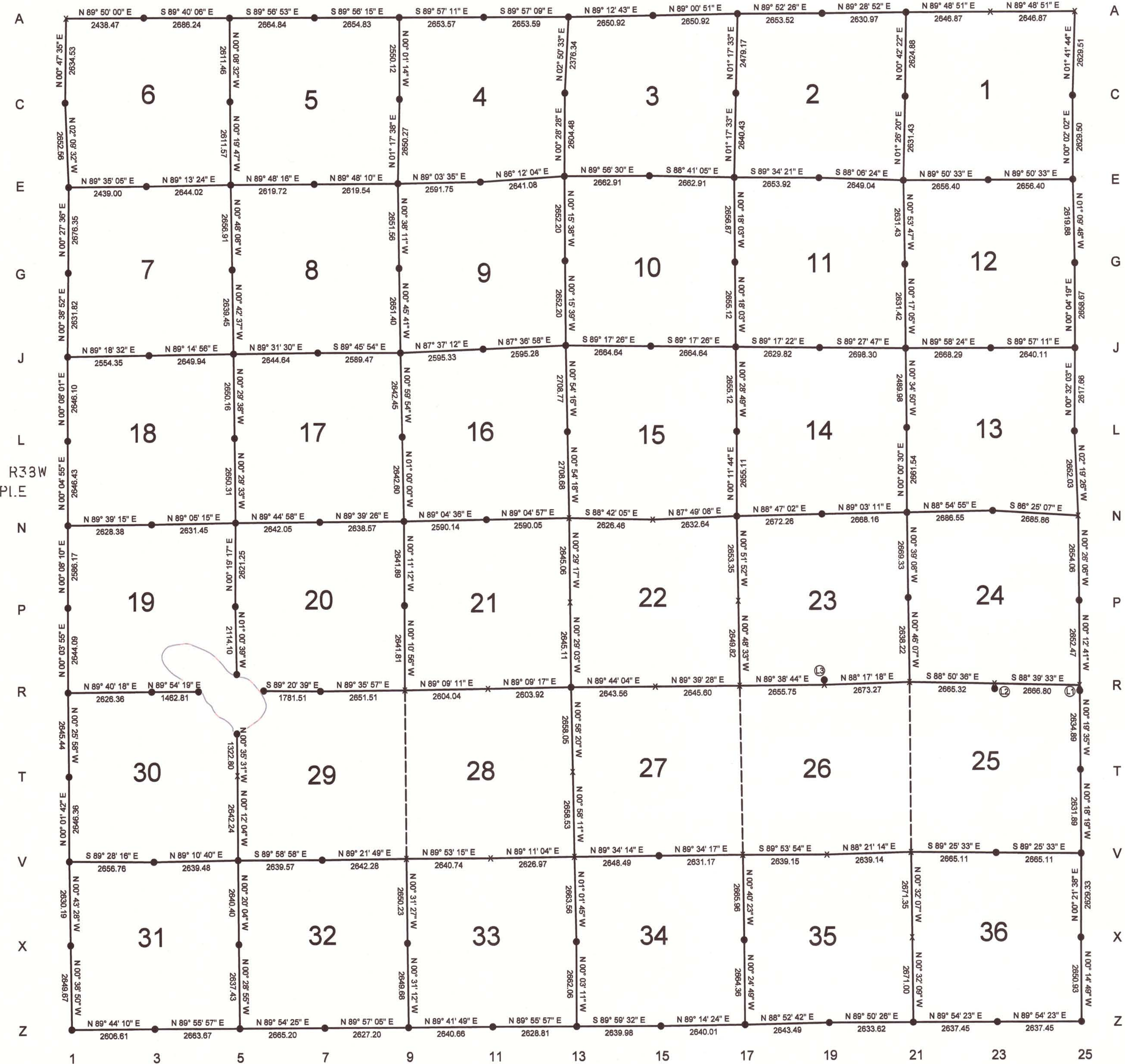


T147N R33W
POPPI.E

T147N R36W
SHEVL.IN

T146N R37W
NORA

Orientation of this bearing system is the
Clearwater County coordinate system (NAD83-1996 ad).



Index	Northing	Easting	Monument/Comment
A-1	258868.730	487618.337	Certified Corner - Gary Thompson
A-3	258875.822	490056.800	3/4" Pipe
A-5	258860.278	492742.991	RLS 15810
A-7	258857.864	495407.834	Railroad Spike
A-9	258854.970	498062.662	RLS Cap - Unreadable
A-11	258852.794	500716.230	RLS 16102
A-13	258850.597	503369.820	RLS 23668 SET
A-15	258847.054	506020.491	RLS 23668 SET
A-17	258932.668	508671.018	RLS 23668 SET
A-19	258938.506	511324.533	RLS 23668 SET
A-21	258962.327	513955.397	RLS 47934
A-23	258970.912	516602.252	Certified Corner - Amanda Brustad
A-25	258979.496	519249.107	Certified Corner - Gary Thompson
C-1	256234.457	487581.867	RLS Cap - Unreadable
C-5	256248.828	492749.472	RLS 15810
C-9	256304.852	498063.582	RLS 15810
C-13	256477.182	503251.979	RLS 23668 SET
C-17	256454.133	508615.094	RLS 23668 SET
C-21	256337.651	513923.046	RLS 23668 SET
C-25	256351.140	519171.307	RLS 23668 SET
E-1	253583.779	487681.790	RLS 23668 SET
E-3	253601.462	490120.726	RLS 23668 SET
E-5	253637.305	492764.506	RLS 15180
E-7	253646.241	495384.212	RLS 15810
E-9	253655.261	498033.738	RLS 15810
E-11	253697.798	500599.138	RLS 23668 SET
E-13	253872.787	503230.415	RLS 23668 SET
E-15	253875.503	505893.323	RLS 23668 SET
E-17	253814.377	508555.533	RLS 23668 SET
E-19	253794.573	511209.381	RLS 23668 SET
E-21	253707.051	513856.974	RLS 23668 SET
E-23	253714.347	516513.365	RLS 23668 SET
E-25	253721.644	519169.757	RLS 23668 SET
G-1	250907.518	487660.301	RLS 23668 SET
G-5	250980.654	492801.704	RLS 15810
G-9	251003.869	498033.191	RLS 15810
G-13	251220.613	503242.482	RLS 23668 SET
G-17	251157.539	508569.487	Sleigh Shoe
G-19	251136.385	511225.326	1-1/2" Rod
G-21	251075.948	513898.139	RLS 23668 SET
G-25	251102.301	519222.950	RLS 23668 SET
J-1	248275.867	487630.546	RLS 23668 SET
J-3	248306.672	490184.715	RLS 43934
J-5	248341.404	492834.423	RLS 15815
J-7	248363.333	495478.974	RLS 23668 SET
J-9	248352.707	498068.426	RLS 15810
J-11	248460.484	500661.517	RLS 15810
J-13	248568.440	503254.550	RLS 15810
J-15	248535.447	505918.986	RLS 23668 SET
J-17	248502.455	508583.422	RLS 23668 SET
J-19	248469.842	511213.041	RLS 23668 SET
J-21	248444.556	513911.220	RLS 23668 SET
J-23	248445.803	516579.510	RLS 23668 SET
J-25	248443.637	519219.617	RLS 23668 SET
L-1	245629.770	487624.381	RLS 47950
L-5	245691.340	492857.264	RLS 15810
L-9	245710.660	498114.465	RLS 15810
L-13	245860.011	503297.314	RLS 15810
L-17	245847.433	508605.679	RLS 23668 SET
L-21	245954.700	513936.452	RLS 23668 SET

Index	Northing	Easting	Monument/Comment
L-25	245826.090	519195.208	RLS 23668 SET
N-1	242983.346	487620.590	RLS 15815
N-3	242999.214	490248.922	RLS 47934
N-5	243041.126	492880.042	RLS 15810
N-7	243052.676	495522.063	RLS 15810
N-9	243068.458	498160.581	RLS 15810
N-11	243110.191	500750.384	RLS 15810
N-13	243151.668	503340.101	Certified Corner - Robert Murray
N-15	243092.150	505965.884	Certified Corner - Robert Murray
N-17	243192.338	508596.618	RLS 23668 SET
N-19	243249.057	511268.273	RLS 23668 SET
N-21	243293.158	513936.065	RLS 23668 SET
N-23	243344.019	516622.132	RLS 23668 SET
N-25	243176.238	519302.750	Certified Corner - Gary Thompson
P-1	240397.187	487614.449	3/4" Pipe
P-5	240419.915	492865.344	3/4" Pin
P-9	240426.579	498169.186	RLS 15810
P-13	240506.700	503362.630	Certified Corner - Robert Murray
P-17	240539.286	508636.650	Certified Corner - Amanda Brustad
P-21	240623.959	513966.450	RLS 23668 SET
P-25	240522.259	519322.903	RLS 23668 SET
WC QR-5	238306.139	492902.637	1" Pipe - Witness to line
R-1	237753.096	487611.440	RLS 15815
R-3	237768.149	490237.756	2" Pipe
R-5	237770.567	491700.561	RLS 23668 SET - Witness to line
WC R-5/6	237786.624	493744.756	RLS In Concrete - Unreadable
R-7	237766.236	495526.149	RLS 15483
R-9	237784.782	498177.590	Certified Corner - Robert Murray
R-11	237823.272	500781.346	Certified Corner - Robert Murray
R-13	237861.682	503384.982	Sleigh Shoe
R-15	237873.934	506028.516	Certified Corner - Amanda Brustad
R-17	237889.730	508674.069	Certified Corner - Amanda Brustad
R-19	237906.165	511329.767	Position Only
WC R-19	237966.165	511328.986	RLS 23668 SET
R-21	237986.020	514001.840	Certified Corner - Gary Thompson
R-23	237932.211	516666.617	Position Only
R-25	237872.212	516666.958	RLS 23668 SET
A-25	237869.809	519332.689	Position Only
WC R-25	237794.810	519333.117	RLS 23668 SET
WC R-5	236439.684	492903.021	RLS 23668 SET - Witness to line
T-1	235107.733	487631.416	RLS 15483
T-5	235116.956	492916.690	Certified Corner - Amanda Brustad
T-13	235204.001	503430.082	Certified Corner - Robert Murray
T-25	235234.962	519347.696	RLS 23668 SET
V-1	232461.375	487630.110	RLS 18164
V-3	232436.852	490286.756	RLS 23668 SET
V-5	232474.733	492925.960	RLS 23668 SET
V-7	232473.945	495565.527	RLS 23668 SET
V-9	232503.290	498207.640	Certified Corner - Gary Thompson
V-11	232508.470	500848.370	Certified Corner - Gary Thompson
V-13	232545.860	503475.070	Certified Corner - Gary Thompson
V-15	232565.716	506123.487	1/2" Re-Bar with washer
V-17	232585.400	508754.580	Certified Corner - Gary Thompson
V-19	232580.720	511393.730	Certified Corner - Gary Thompson
V-21	232656.530	514031.780	Certified Corner - Gary Thompson
V-23	232629.819	516696.752	RLS 23668 SET
V-25	232603.108	519361.724	RLS 23668 SET
X-1	229831.395	487663.362	1/2" Re-Bar
X-5	229834.374	492941.368	RLS 23668 SET
X-9	229853.168	498231.888	RLS 17768
X-13	229882.727	503522.908	RLS 15810
X-17	229919.622	508785.894	RLS 15810
X-21	229985.300	514056.740	Certified Corner - Gary Thompson
X-25	229973.831	519345.173	RLS 15815
Z-1	227181.890	487693.296	RLS 23668 SET
Z-3	227193.894	490299.880	RLS 23668 SET
Z-5	227197.038	492963.550	RLS 23668 SET
Z-7	227201.365	495628.745	RLS 23668 SET
Z-9	227203.594	498255.940	5/8" Pin
Z-11	227217.566	500896.568	RLS 23668 SET
Z-13	227220.666	503525.375	RLS Cap - Unreadable
Z-15	227220.308	506165.350	RLS 15810
Z-17	227255.328	508805.129	RLS 15810
Z-19	227307.078	511448.113	RLS 15810
Z-21	227314.413	514081.725	RLS 15810
Z-23	227318.726	516719.167	RLS 23668 SET
Z-25	227323.039	519356.610	Cast Iron Monument

LINE	DIRECTION	DISTANCE
L1	N 00-19-35 W	75.00
L2	N 00-19-32 W	60.00
L3	S 00-44-45 E	60.00

Surveyors Notes

The work shown on this Certificate of Survey was completed under contract to recover and re-establish Public Land Survey corners in Shevlin Township (T147N-R36W), Copley Township (T147N-R37W) and Popple Township (T147N-R38W) in Clearwater County.

Corners shown as a monument on this Certificate of Survey were recovered, re-set or set. Certificates of Location were completed on these corners, and can be reviewed in the Office of the County Recorder.

Corners shown as an "X" on this Certificate of Survey are either positional only with a witness corner set, or a non-contracted corner location. All non-contracted corner locations shown on this Certificate of Survey are based on recorded Certificates of Location prepared by other surveyors as indicated. Positional accuracy of all non-contracted corner locations should be verified in the field.



Client Name: Clearwater County

No.	Date	REVISIONS

I HEREBY CERTIFY THAT THIS PLAN, SURVEY, OR REPORT WAS PREPARED BY ME OR UNDER MY DIRECT SUPERVISION AND THAT I AM A DULY REGISTERED LAND SURVEYOR UNDER THE LAWS OF THE STATE OF MINNESOTA.
 SIGNATURE: *James Kramer* DATE: 2-22-2016
 JAMES KRAMER, MN LICENSE NUMBER 23668
 PROJECT NO. CLEAC1401

