

CERTIFICATE OF SURVEY

**SECTION 35, TOWNSHIP 147 NORTH, RANGE 38 WEST,
CLEARWATER COUNTY, MINNESOTA**

ELAINE LEBEDA SURVEY

Elaine Lebeda Parcel:

That part of the Southeast Quarter of the Southeast Quarter, Section 35, Township 147 North, Range 38 West of the Fifth Principal Meridian, Clearwater County, Minnesota being described as follows:

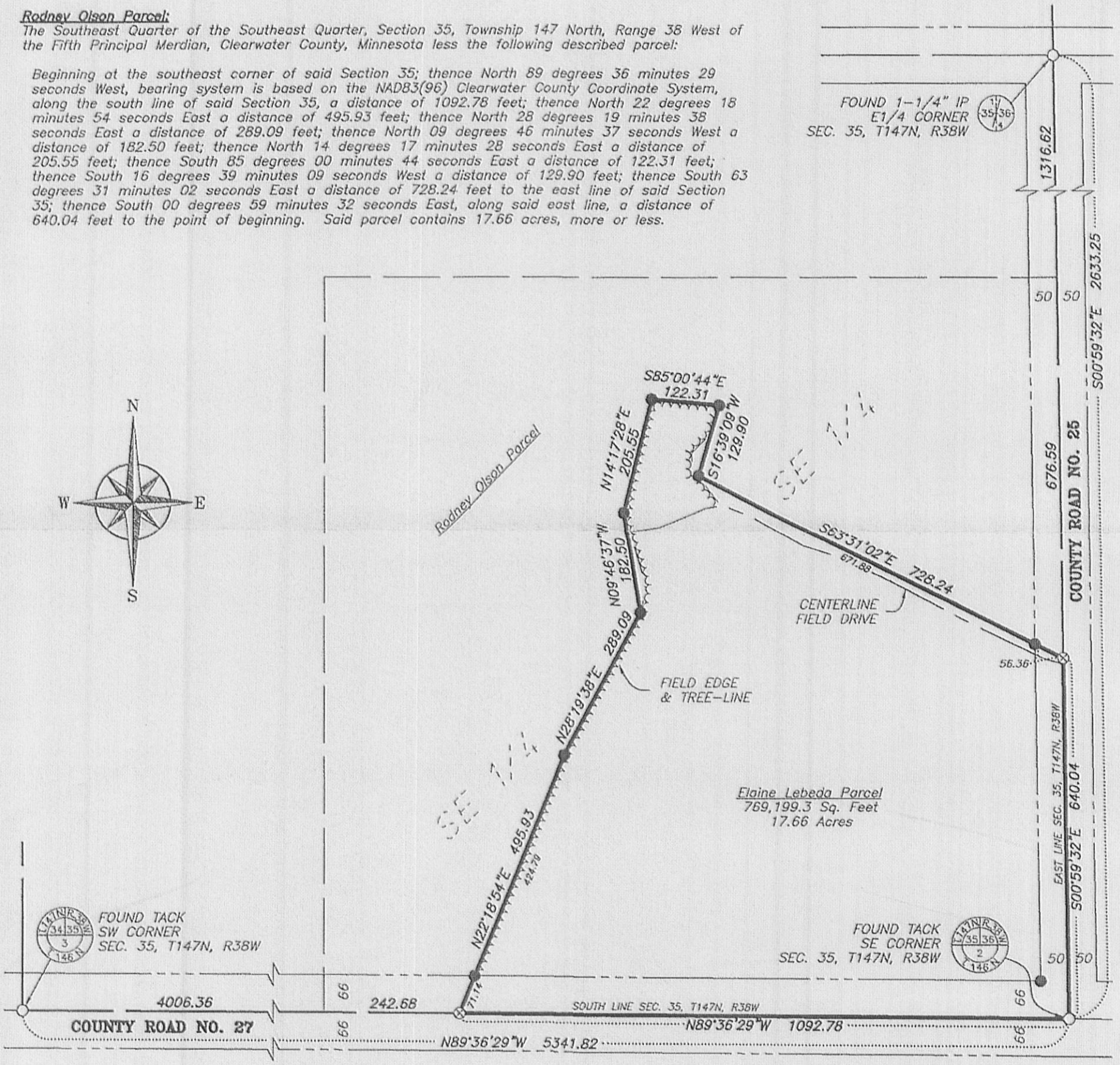
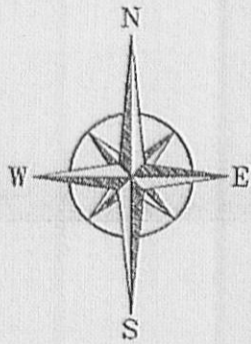
Beginning at the southeast corner of said Section 35; thence North 89 degrees 36 minutes 29 seconds West, bearing system is based on the NAD83(96) Clearwater County Coordinate System, along the south line of said Section 35, a distance of 1092.78 feet; thence North 22 degrees 18 minutes 54 seconds East a distance of 495.93 feet; thence North 28 degrees 19 minutes 38 seconds East a distance of 289.09 feet; thence North 09 degrees 46 minutes 37 seconds West a distance of 182.50 feet; thence North 14 degrees 17 minutes 28 seconds East a distance of 205.55 feet; thence South 85 degrees 00 minutes 44 seconds East a distance of 122.31 feet; thence South 16 degrees 39 minutes 09 seconds West a distance of 129.90 feet; thence South 63 degrees 31 minutes 02 seconds East a distance of 728.24 feet to the east line of said Section 35; thence South 00 degrees 59 minutes 32 seconds East, along said east line, a distance of 640.04 feet to the point of beginning. Said parcel contains 17.66 acres, more or less.

Rodney Olson Parcel:

The Southeast Quarter of the Southeast Quarter, Section 35, Township 147 North, Range 38 West of the Fifth Principal Meridian, Clearwater County, Minnesota less the following described parcel:

Beginning at the southeast corner of said Section 35; thence North 89 degrees 36 minutes 29 seconds West, bearing system is based on the NAD83(96) Clearwater County Coordinate System, along the south line of said Section 35, a distance of 1092.78 feet; thence North 22 degrees 18 minutes 54 seconds East a distance of 495.93 feet; thence North 28 degrees 19 minutes 38 seconds East a distance of 289.09 feet; thence North 09 degrees 46 minutes 37 seconds West a distance of 182.50 feet; thence North 14 degrees 17 minutes 28 seconds East a distance of 205.55 feet; thence South 85 degrees 00 minutes 44 seconds East a distance of 122.31 feet; thence South 16 degrees 39 minutes 09 seconds West a distance of 129.90 feet; thence South 63 degrees 31 minutes 02 seconds East a distance of 728.24 feet to the east line of said Section 35; thence South 00 degrees 59 minutes 32 seconds East, along said east line, a distance of 640.04 feet to the point of beginning. Said parcel contains 17.66 acres, more or less.

FOUND 1-1/4" IP
E1/4 CORNER
SEC. 35, T147N, R38W

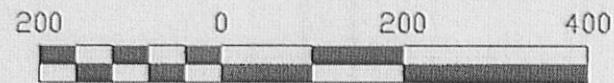


LEGEND

- IRON MONUMENT FOUND
- IRON MONUMENT SET WITH CAP NO. 14455
- ⊗ "MAG" NAIL SET
- PROPERTY BOUNDARY
- - - RIGHT-OF-WAY
- - - SIXTEENTH-LINE
- - - QUARTER-LINE
- - - SECTION-LINE
- - - CENTERLINE OF ROAD
- ~~~~~ TREE-LINE

SCALE

1" = 200'



COORDINATES AND BEARINGS ARE BASED ON NAD83 MINNESOTA STATE PLANE COORDINATE SYSTEM NORTH ZONE

**NORTHWESTERN SURVEYING
AND ENGINEERING, INC.**

P.O. BOX 3067 BEMIDJI MN 56619 218-444-0394

I HEREBY CERTIFY THAT THIS SURVEY, PLAN OR REPORT WAS PREPARED BY ME OR UNDER MY DIRECT SUPERVISION AND THAT I AM A DULY LICENSED LAND SURVEYOR UNDER THE LAWS OF THE STATE OF MINNESOTA.

Arthur D. Larson
ARTHUR D. LARSON

LIC. NO. 14455

JOB NO. 09055
DATE: 08-17-2009