

56561

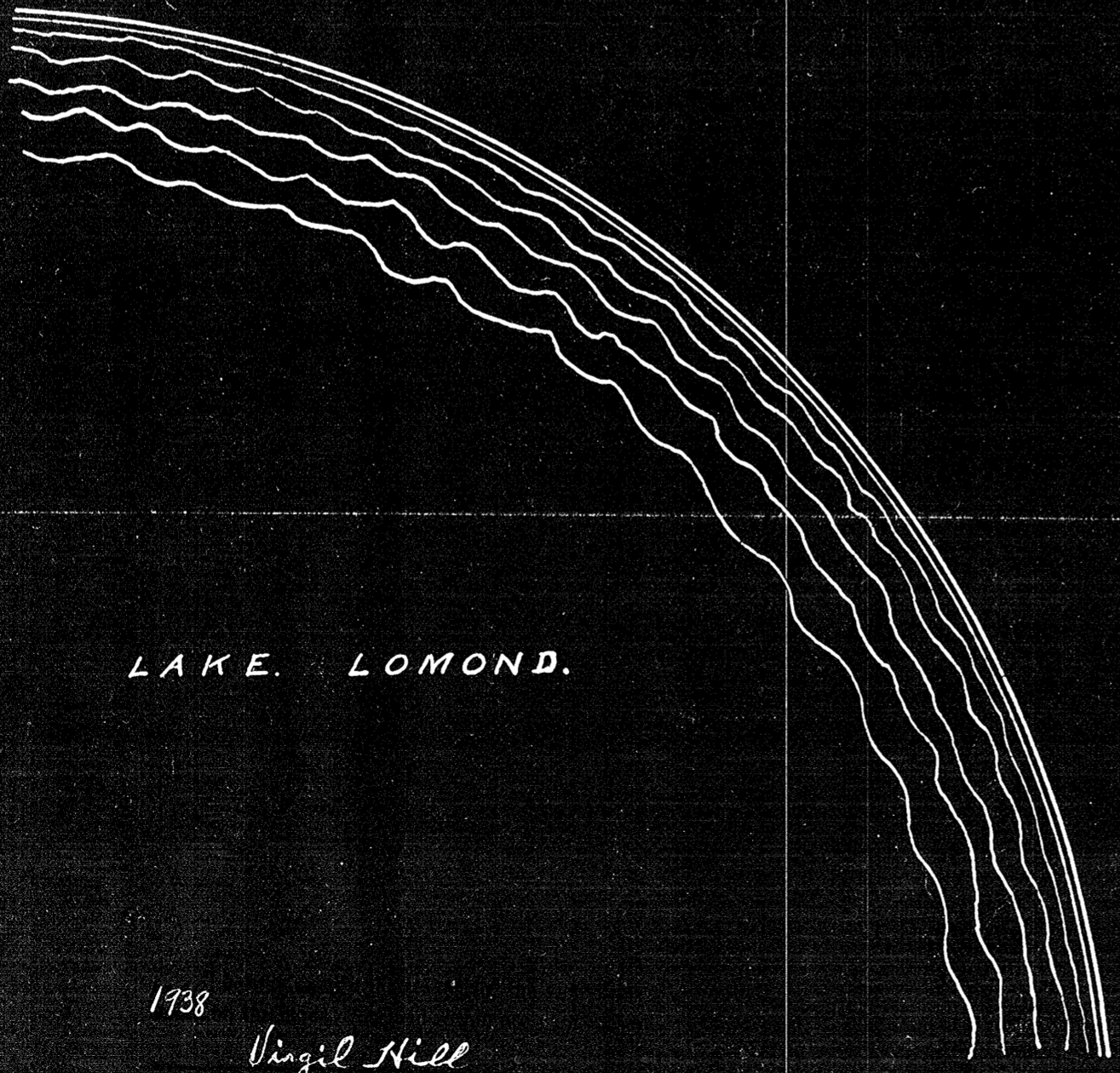
20th June
1939 9:15 a.m.
Plats A
H. Blaastuen

NEUJAHRS LAKE VIEW.

SCALE: 1 in. = 100'

I, W. J. Buckley, a Registered Highway Engineer and Land Surveyor in the State of Minnesota do hereby certify that the annexed plat which shall be designated as "LAKE VIEW" is a true representation of survey made by me under the direction of A. W. Neujahr. That all courses, angles, and distances are correctly shown, that I have established iron monuments at points indicated on plat, that I have subdivided part of platted tract into lots and alleys as shown and that the following is a true description of platted tract.
All that part of the S. 1/4 of the S.W. 1/4 of Sec. 20, T. 147 R. 37 bounded by lines as follows:
Beginning at a point on the south line of section 20, T. 147 R. 37 a distance of 1140 feet west of the S. 1/4 corner of said section 20, thence West 193.1 feet, thence N. 41° 37' W. 767.3 feet, thence N. 49° 26' E. 641 feet, thence S. 55° 18' E. 261.8 feet, thence South 840.3 feet to place of beginning.
Containing 9.9 acres.
Dated at Bagley, Minnesota this 3rd day of June 1939.

W. J. Buckley Surveyor.



LAKE LOMOND.

1938

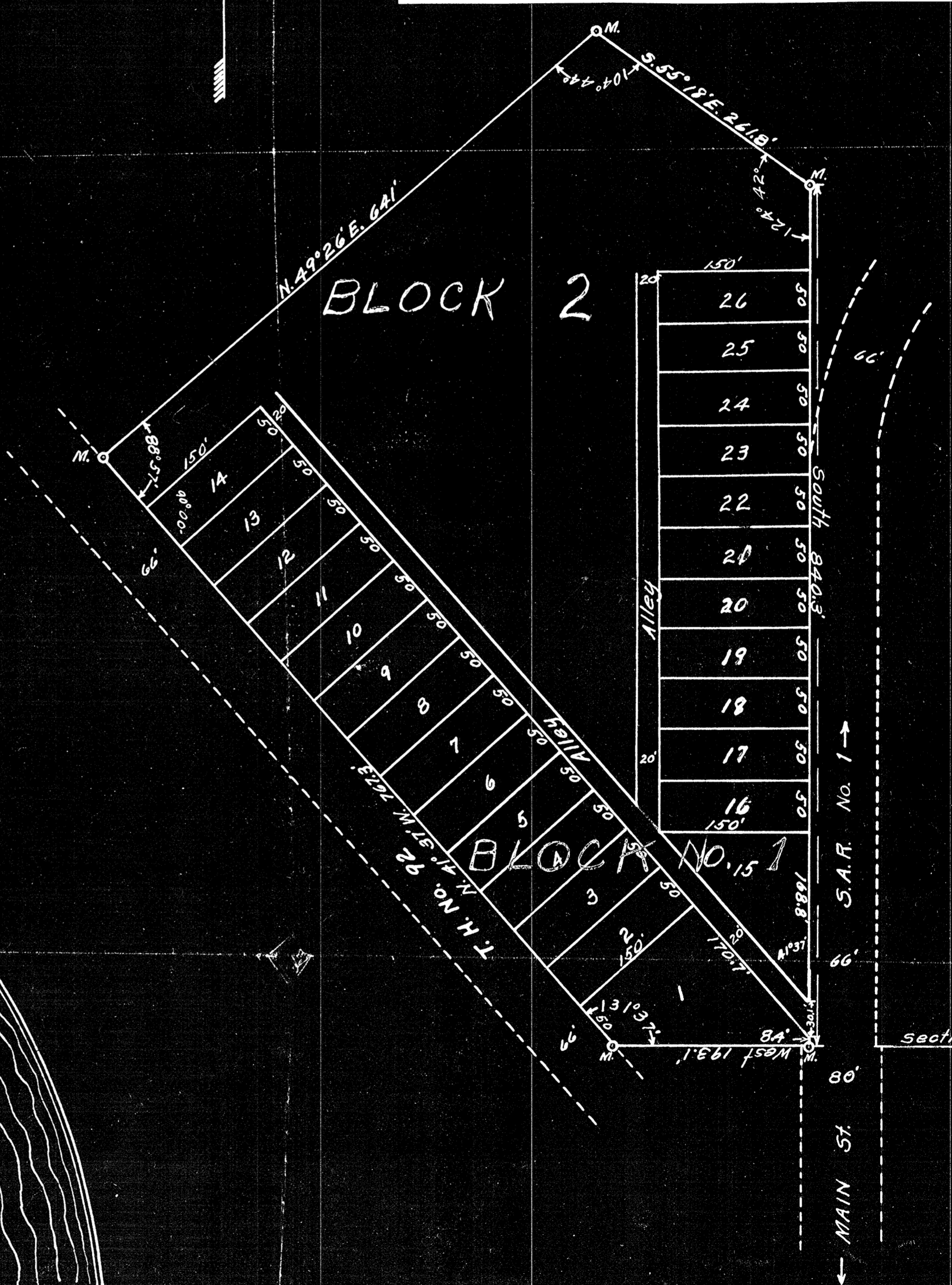
Vingil Hill

20th June
1939
Frank A. Neujahr

KNOW ALL MEN BY THESE PRESENTS, That we, Arthur W. Neujahr and I. Viole Neujahr, his wife, owners and proprietors of all the land hereinafter described, have caused to be hereunto set forth the following plat for the public use to serve all the streets, roads, alleys and highways shown hereon which are shown on the following plat, to-wit: The County of Bagley, State of Minnesota.

Witness my hand and seal this 3rd day of June 1939.

H. Blaastuen



194
Frank A. Neujahr