

Office of Register of Deeds,  
 County of Clearwater, Minn.  
 I hereby certify that the within instrument  
 was filed in this office for record on the  
 24th day of January A. D. 1907 at  
 A. D. 1907 at 2 o'clock P. M.  
 and was duly recorded in Book 17  
 of Plats at page 17  
 Register of Deeds,  
 By Wm. A. Glendon Deputy.

# MURRAY.

Surveyed by Bert F. Umstead, Deputy Surveyor August 3rd A.D. 1906.

State of Minnesota }  
 County of Clearwater }  
 On this 14th day of January 1907 Personally appeared before me a Notary Public  
 within and for said county the persons Charles P. Murray and Maggie  
Murray, his wife, to me known to be the persons whose names are  
 subscribed to the foregoing and annexed plat and acknowledged said  
 the same as their free act and deed.

Know all Men By These Presents that Charles P. Murray and Marguerite S. Murray, his wife, owners and proprietors of the land described in the plat herein to be known as "Murray" have caused the same to be laid out in accordance with the plat contained on this page and dedicate to the public and for the public use forever all streets, avenues and alleys as thereon shown.

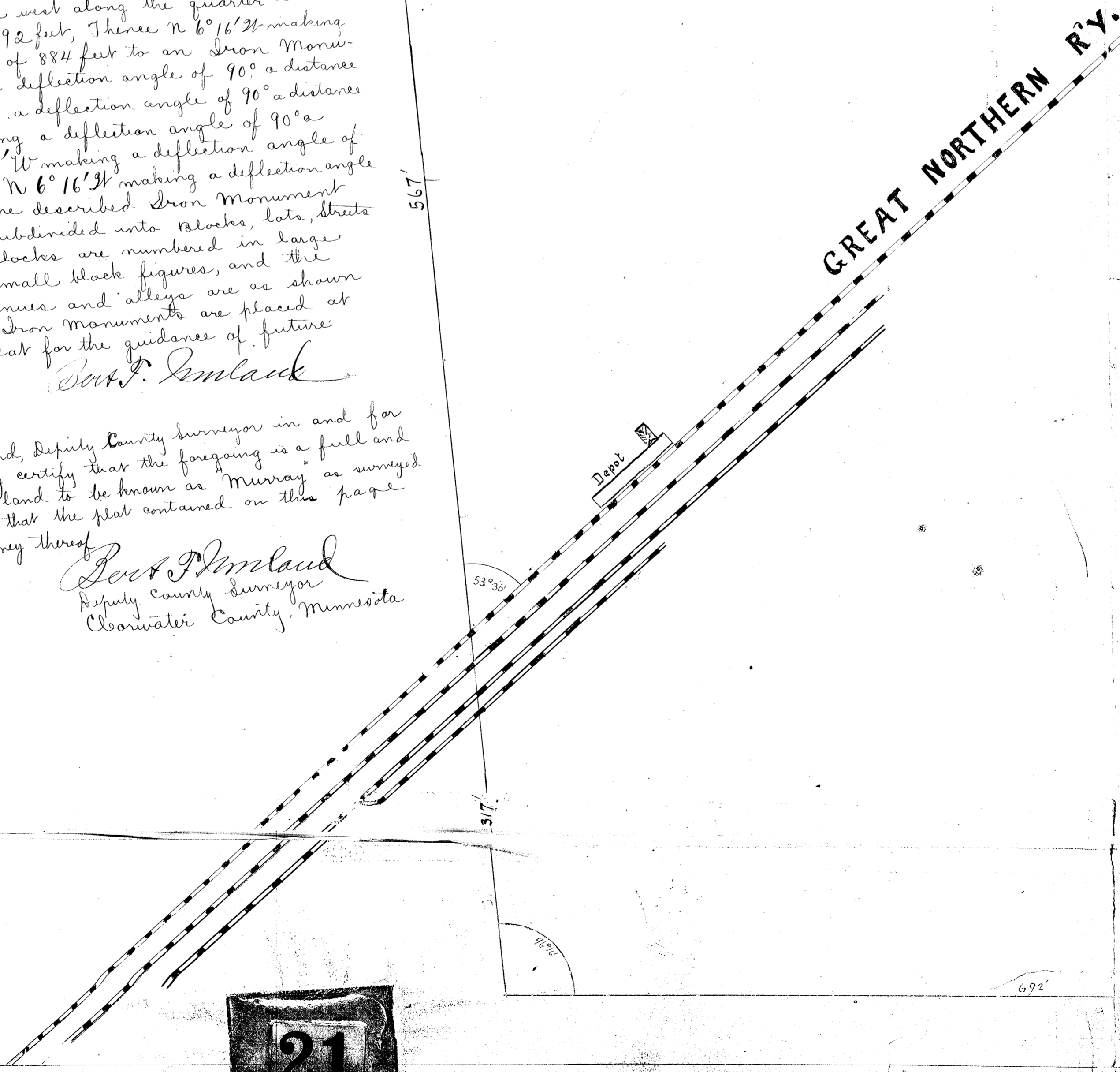
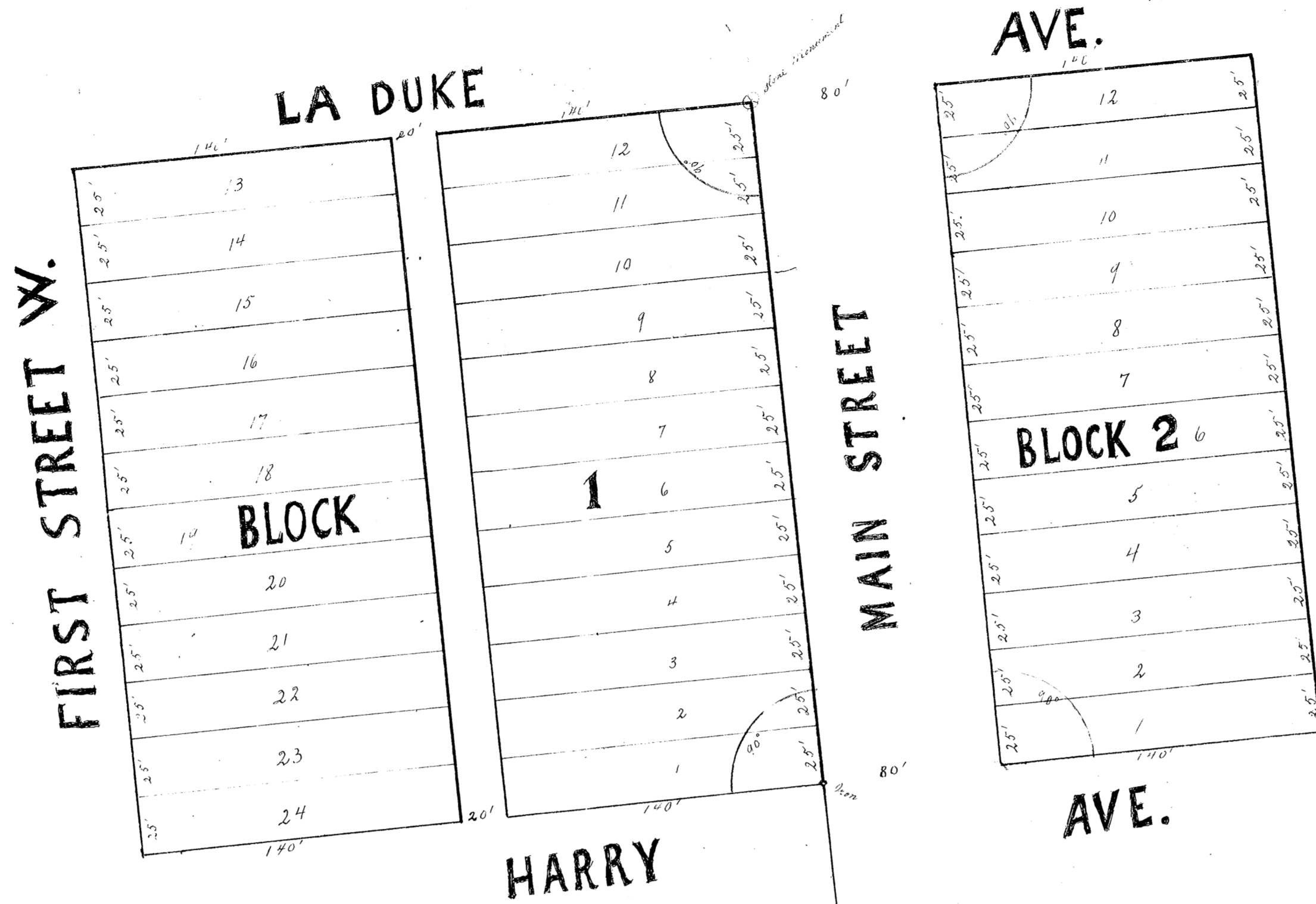
In Witness Whereof We have hereunto set our hands and seals this 24th day of January A. D. 1907  
 Wm. A. Glendon  
 Notary Public  
 Charles P. Murray  
 Marguerite S. Murray

State of Minnesota }  
 County of Clearwater } SS  
 On this 24th day of January A. D. 1907 before me, a Notary Public, within and for said County personally appeared Charles P. Murray and Marguerite S. Murray, his wife, to me known to be the persons described in and who executed the annexed plat and acknowledged that they executed the same as their free act and deed.  
 Wm. A. Glendon  
 Notary Public  
 Clearwater County, Minn.

State of Minnesota }  
 County of Clearwater } SS  
 I, Thomas Wittie, County Surveyor in and for said County and State do hereby certify that the annexed plat of lands therein described surveyed by Bert Umstead, Deputy County Surveyor shows all boundary lines and the sizes of all fractional lots correctly, and that all stone monuments appearing on said plat have been correctly placed.  
 Dated at Bagley, Minn. this 24th day of December A.D. 1906  
 Thomas Wittie  
 County Surveyor  
 Clearwater County, Minn.

The tract of land designated by the plat contained on this page and to be known as "Murray" is situated in the S.E. 1/4 of the N.E. 1/4 of Section Six, Township One hundred forty-six N. of Range Thirty-eight West of the 5th P.M. in Clearwater County, Minnesota and more fully described as follows, to-wit: Beginning at the 1/4 section corner on the eastern boundary of said section Six; Thence west along the quarter line of said section Six a distance of 692 feet; Thence N 6° 16' 34" making a deflection angle of 96° 16' a distance of 884 feet to an Iron Monument; Thence N 83° 41' 11" making a deflection angle of 90° a distance of 300 feet; Thence N 6° 16' 34" making a deflection angle of 90° a distance of 300 feet; Thence N 83° 41' 11" making a deflection angle of 90° a distance of 520 feet; Thence S 6° 16' 34" making a deflection angle of 90° a distance of 300 feet; Thence N 6° 16' 34" making a deflection angle of 90° a distance of 220 feet to above described Iron Monument containing 3.98 acres, which are subdivided into blocks, lots, streets, avenues and alleys. The blocks are numbered in large black figures and the lots in small black figures, and the dimensions of all lots, streets, avenues and alleys are as shown on the plat and the stone and Iron Monuments are placed at the points designated on the plat for the guidance of future surveys.  
 Bert F. Umstead

State of Minnesota }  
 County of Clearwater } SS  
 I, Bert F. Umstead, Deputy County Surveyor in and for said County and State do hereby certify that the foregoing is a full and true description of the tract of land to be known as Murray as surveyed by me in August A. D. 1906 and that the plat contained on this page is correct according to said survey thereof.  
 Bert F. Umstead  
 Deputy County Surveyor  
 Clearwater County, Minnesota



Scale: 1 inch = 50 feet