

Description
 This tract of land designated by the plat contained on this page and to be known as "MOOSE" is situated in the S.W. 1/4 of the S.W. 1/4 of Section 25 in T146 N. of R. 36 W. of the 5th prin. mer. and more fully described as follows: to wit:
 Beginning at a point on the sec. line between secs. 25 & 26 in said town and range a distance of 262.87 ft. South of the 1/16 sec. corner on said sec. line between the S.W. 1/4 of said sec. 25 and the S.E. 1/4 of said sec. 26 thence South along the aforesaid section line a distance of 461.89 ft. to the north bank of a certain lake in said secs. 25 & 26 thence South easterly making a deflection angle of 60°00' a distance of 892.83 ft.; thence North easterly making a deflection angle of 136°2' a distance of 576.16 ft. thence North westerly making a deflection angle of 43°58' a distance of 709.10 ft. to the place of beginning containing 7.35 acres which are subdivided into blocks, lots, streets, avenues and alleys. The blocks are numbered in large black figures, the lots in small black figures and the dimensions of all lots, streets, avenues and alleys are as shown on plat in small black figures. Stone monuments were placed at points designated on plat for the guidance of future surveys.

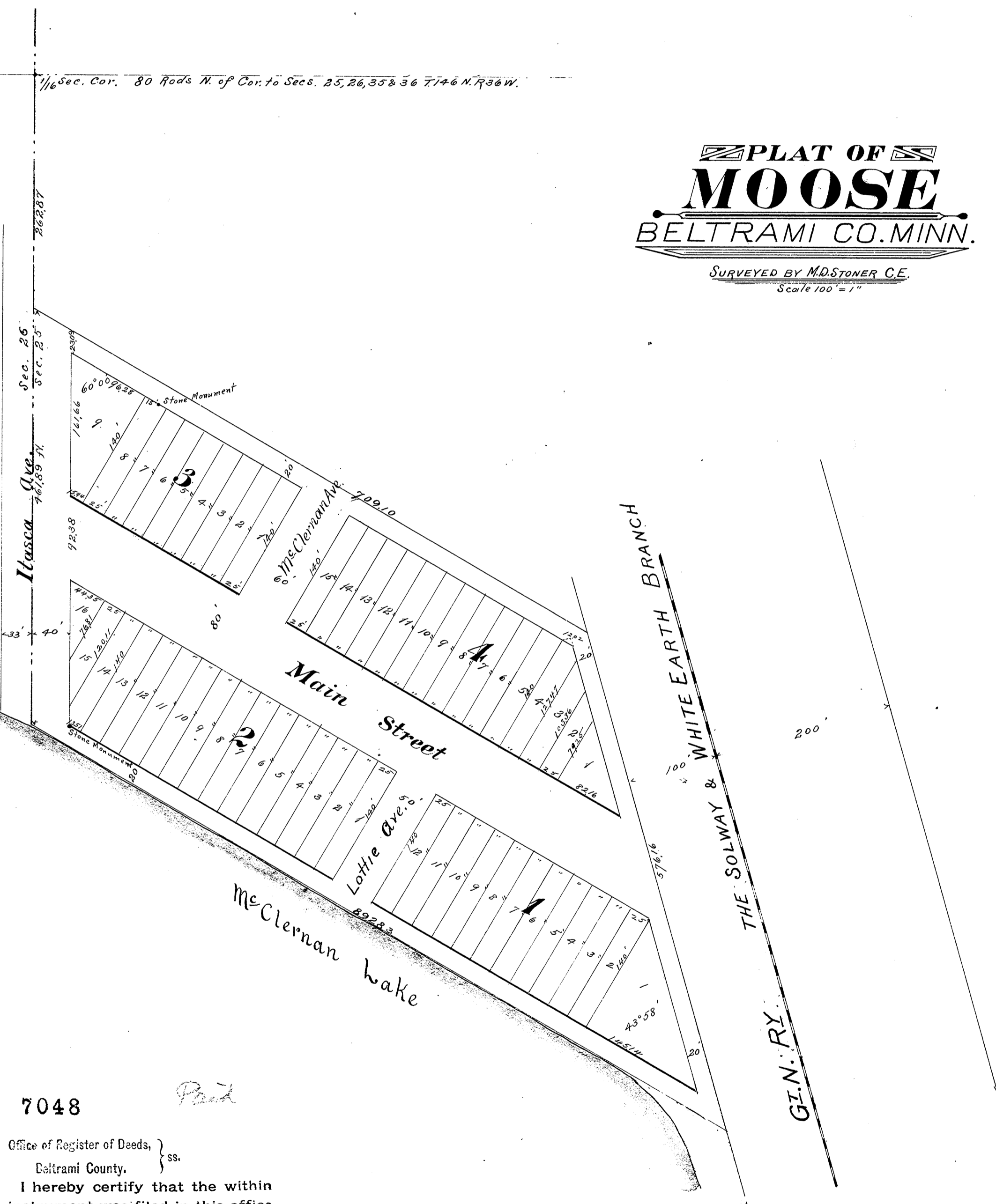
State of Minnesota }
 County of Beltrami } ss
 I, Marcus D. Stoner, County Surveyor in and for said County and State do hereby certify that the foregoing is a full and true description of the tract of land to be known as "MOOSE" as surveyed by me in Oct. 1901; that the plat contained on this page is correct according to said survey thereof; that the stone monuments, having a + on upper face for exact reference point, have been placed at points indicated on this plat for the guidance of future surveys and that the boundary lines of the lands platted are correctly shown on the said plat.

Given under my hand at Bemidji, Minn. this 28th day of Oct. A.D. 1901
 Marcus D. Stoner
 County Surveyor
 Beltrami Co. Minn.

Know all men by these presents that Henry J. McClerman and Veronica McClerman his wife owners and proprietors of the above described land to be known as "MOOSE" have caused the same to be laid out in accordance with the plat contained on this page and do hereby dedicate to the public and for the public use forever all streets, avenues and alleys as thereon shown.

In witness whereof we have hereunto set our hands and seals this 1st day of Nov. A.D. 1901 in presence of
 P. Russell } Witnesses
 S. S. S. Lewis }
 Proprietors } Henry J. McClerman
 Veronica McClerman

State of Minnesota }
 County of Beltrami } ss
 On this 1st day of Nov. A.D. 1901 three persons, appeared before me a Notary Public in and for said County and State, Henry J. McClerman & Veronica McClerman his wife as to me personally known to be the persons described in and who executed the foregoing instrument and acknowledged that they executed the same freely and voluntarily for the purposes and uses therein expressed
 P. Russell
 Notary Public
 Beltrami County
 Minn.



7048
 Office of Register of Deeds, }
 Beltrami County, } ss.
 I hereby certify that the within instrument was filed in this office for record on the 1st day of November A. D. 1901 at 3 o'clock, P.M., and was duly Recorded in Book... of... Page...
 Paid

I hereby certify that taxes for the year 1900 on the lands described herein were paid by
 O. J. SHINN, Treas. Beltrami Co.

Taxes paid and transfer entered this 1st day of Nov. 1901
 O. J. Shinn, County Auditor.