

CATEGORY: GIS

REVISED: 3/22/2013

DOCUMENT TITLE: **How to locate and print aerial photography of a Clearwater County parcel**

SOLUTION

Go to www.co.clearwater.mn.us

You can locate Online Mapping in two places:

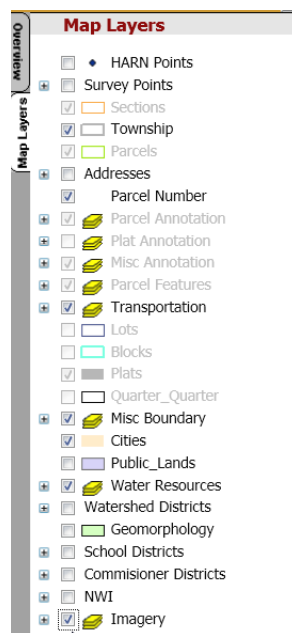
- Click on Online Mapping under Quick Links located on the right hand side of home page.
- Click on Online Services on left hand side menu. Click on Online Mapping listed under Mapping.

Read the Disclaimer and click on Go to Map.

To view the map with imagery click on the Map Layers on the left hand side of the screen.



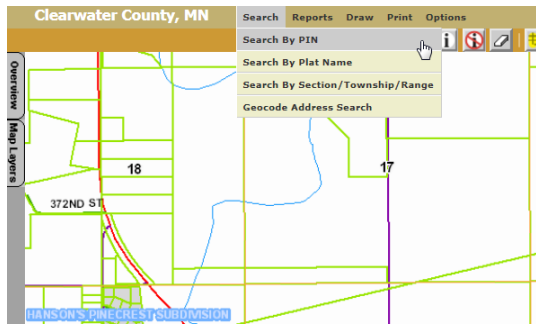
Check the box beside Imagery.



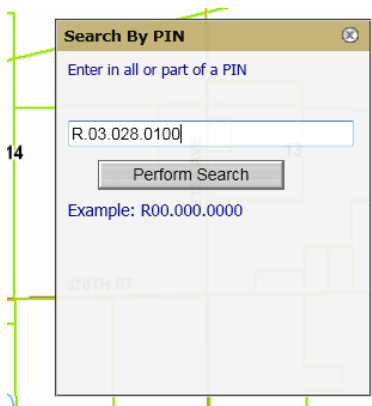
Locate your property two different ways:

1. **SEARCH:** If you know the parcel number of the property (ex. R.03.028.0100):

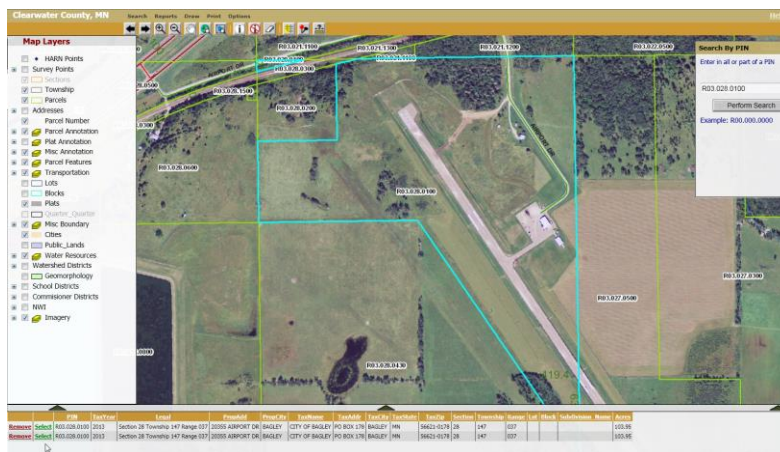
Go to Search – Search By PIN in the top menu.



Enter your PIN number (remember to put the R at the beginning) and click Perform Search

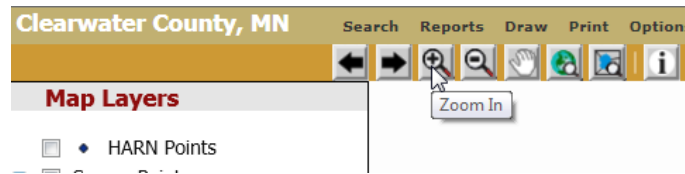


This will zoom to and highlight the parcel.

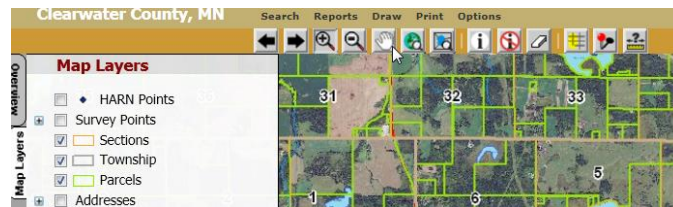


LOCATING AND PRINTING CLEARWATER COUNTY PARCELS continued

- ZOOM:** Click on the zoom tool on the menu bar:

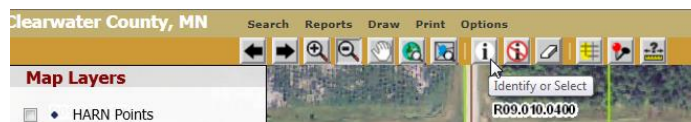


Go to the area of the map where the parcel is located. Hold down your left mouse button and drag around the area and release. This will zoom to the area. If you don't see your parcel, you can click on the hand tool. Hold down your left mouse button and drag to the direction you believe your parcel is located and release.



Keep using your zoom tool until you reach your desired view of the parcel.

If you'd like to find out information on a particular parcel, simply click on the i button in the menu bar and click the parcel. (*This takes a minute to come up*)



The Single Feature box will appear where you can see more information about the parcel.

