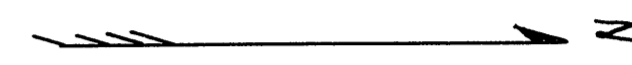


# LARSONS SUBDIVISION

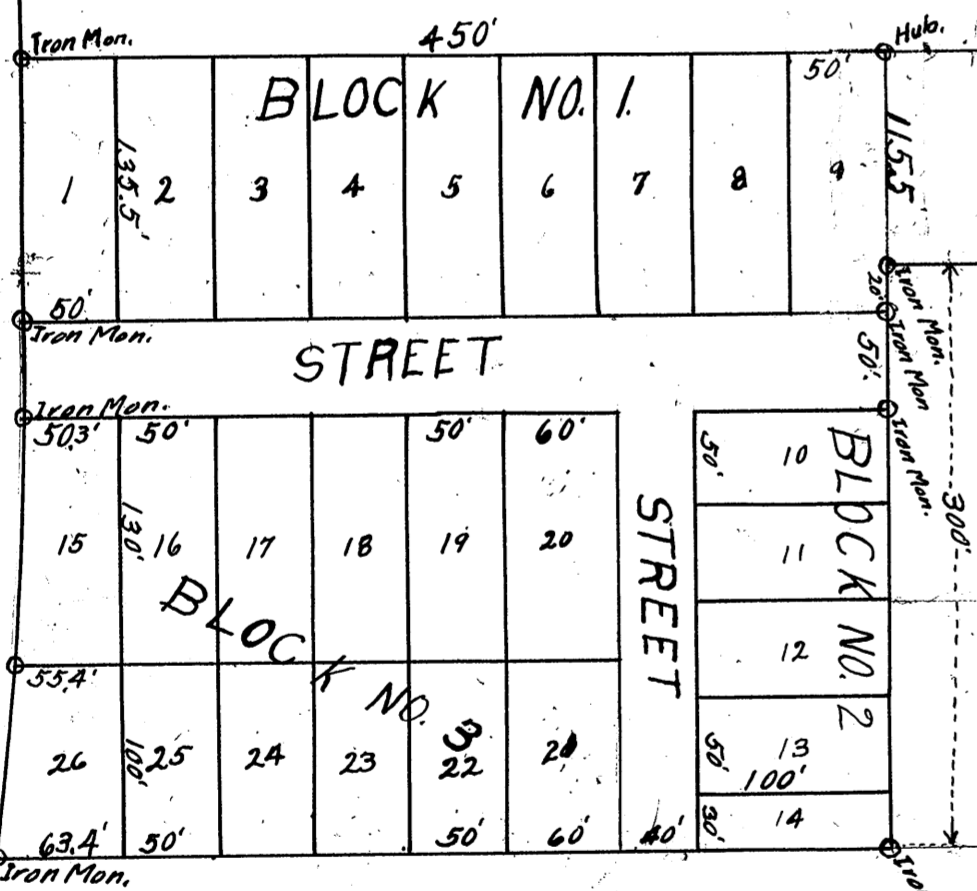
Scale 1 inch = 100'  
300 Feet



STATE of MINNESOTA } ss  
COUNTY of CLEARWATER }

I, Wm. A. Wittse, do hereby certify that the above plat of Larson's Subdivision is a correct representation of the survey made by me this 3rd day of July, 1940, that all distances are correctly shown on this plat, that the outside boundaries are correctly designated on this plat and that the following is a true description of this tract:  
Beginning at a point on the 1/4 line, 50 Ft. North of 1/4 Corner No. 9, I set an iron monument and run East along Highway right-of-way 33 rods, (544.5 Ft.) set Iron Monument, continue East 135.5 Ft. Set Iron Monument, continue straight line East 50 Ft. for street and set Iron Monument 37 and 1/2 Ft. South on R.W. Line, continue East 130 feet to end of lot, set Iron Monument 5.4 Ft. South on R.W. line, continue East 100 Ft. set Iron Monument 13.4 Ft. South on R.W. Line, continue East 360 Ft. set Iron Monument 50 Ft. South at 1/4 Corner No. 8.  
Thence run North to 1/4 Corner No. 6 and continue North to 1/4 corner No. 1.  
Thence from 1/4 corner No. 6 run West, set stake at 660 Ft. continue West to 1/4 corner No. 5 and measure back 33 rods set stake, Thence run line North and South at the 660 Ft. stake, and lay out the streets and lots as shown on this plat.

Wm. A. Wittse  
County Surveyor  
Clearwater County



Know all men by these presents that we, Anton M. Larson and Florence Larson, his wife, owners and proprietors of all the land hereinafter described, have and do, by these presents, caused to be surveyed and platted as designated on this plat, and to be known as Larson's Subdivision, and situated as follows: The West half (W. 1/2) of the North East Quarter (N.E. 1/4) of Section 30, T.147N. R.37W. of the 5th P.M., and do dedicate for Public use forever, all streets and alleys as shown on this plat.

In witness whereof we hereunto set our hands and seals this 28th day of June, 1940 A.D. in presents of

H. Slaastuen  
Frank A. Ormquist  
Witnesses.  
Anton M. Larson  
Florence Larson  
Proprietors.

STATE of MINNESOTA } ss  
COUNTY of CLEARWATER }

On this 28th day of June, 1940 A.D. before me, a Notary Public, in and for said County personally appeared

Anton M. Larson and Florence Larson, his wife, to me known to be the persons who executed the foregoing instrument voluntarily and for the purposes and uses therein expressed.

H. Slaastuen  
Notary Public.

H. SLAASTUEN,  
Notary Public, Clearwater County, Minn.  
My Commission Expires August 26, 1943

Approved by the Board of County Commissioners of Clearwater County this 14th day of July, 1940.

Hugh Patterson  
Chairman.

Attest: Frank A. Ormquist  
County Auditor.

Taxes paid and entered entered this 14th day of July, 1940.

Frank A. Ormquist  
County Auditor.

County Treasurer  
I hereby certify that taxes for the lands described within are paid.

Copied 0  
Indexed 0  
Traced 0  
Checked 0  
58245  
Office of Register of Deeds,  
County of Clearwater, Minn.  
I hereby certify that the within instrument was filed in this office for record on the 17th day of July, A.D. 1941 at 1:00 o'clock P.M. and was duly recorded in Book 12 of Plate 18 on page 18.  
H. Slaastuen  
Register of Deeds.  
By \_\_\_\_\_ Deputy