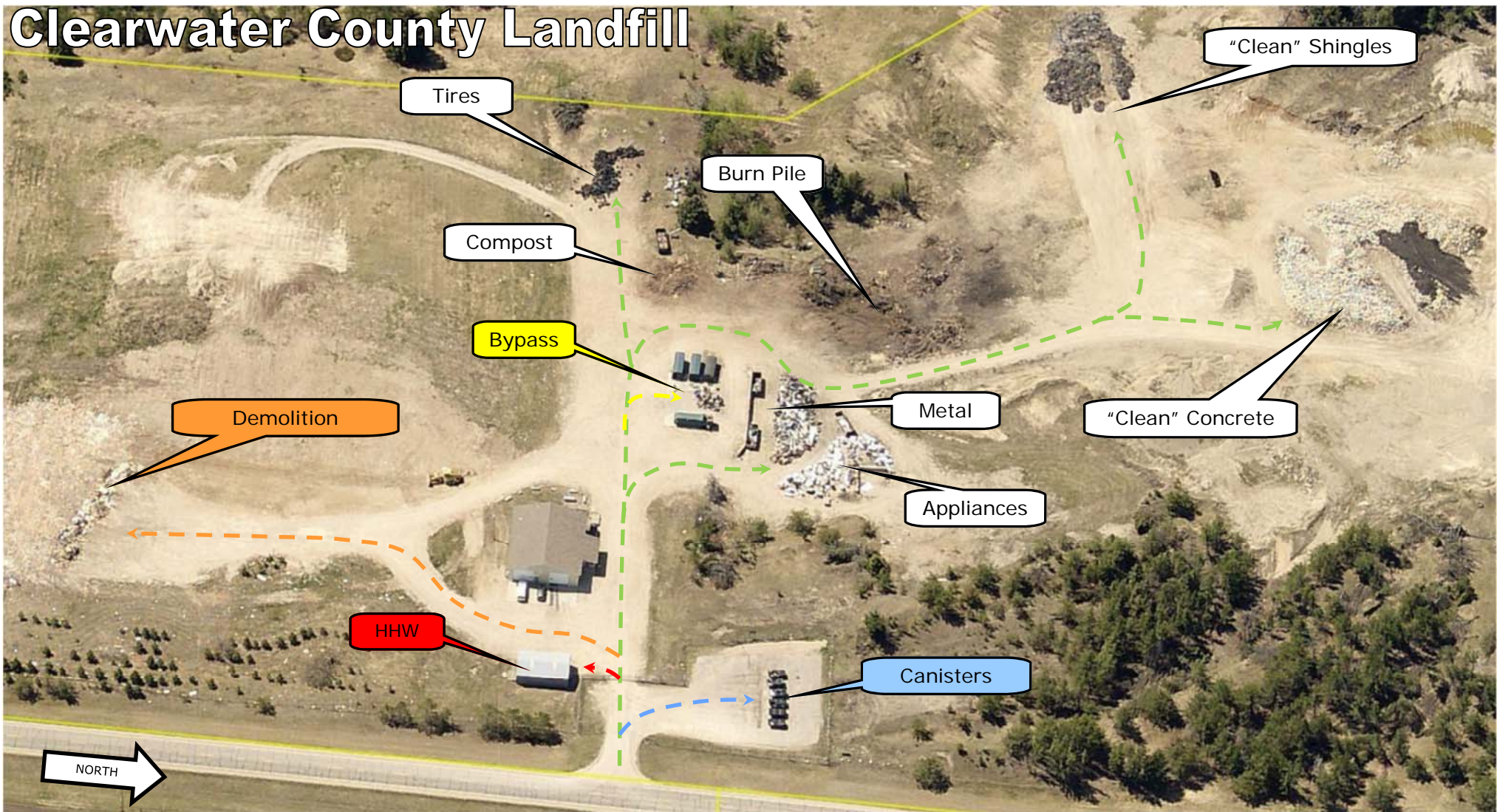


# Clearwater County Landfill



- Untreated Lumber
- "Dirty" Concrete
- "Dirty" Shingles
- Dirt
- Rock
- Siding
- Sheetrock
- Glass
- Asphalt
- Ceramic Fixtures

- Carpet
- Treated Woods
- Plastics/Toys
- Electronics
- Furniture
- Bed Mattress
- Box Spring
- Water Softeners
- Foam
- PVC
- Garden hose
- Finished Woods

- Household garbage
- Any packaging materials
  - Cardboard
  - Caulking Tubes
  - Plastic shingle wraps
  - Paper

- Oil Filters
- Flat Panel TVs
- Fluorescents
- Ballasts
- Paints
- Chemicals
- Batteries



DO NOT PLACE ANY **BYPASS**, **CANISTER**, or **HHW** WASTES IN THE **DEMOLITION!!!**  
**YOU WILL BE CHARGED**