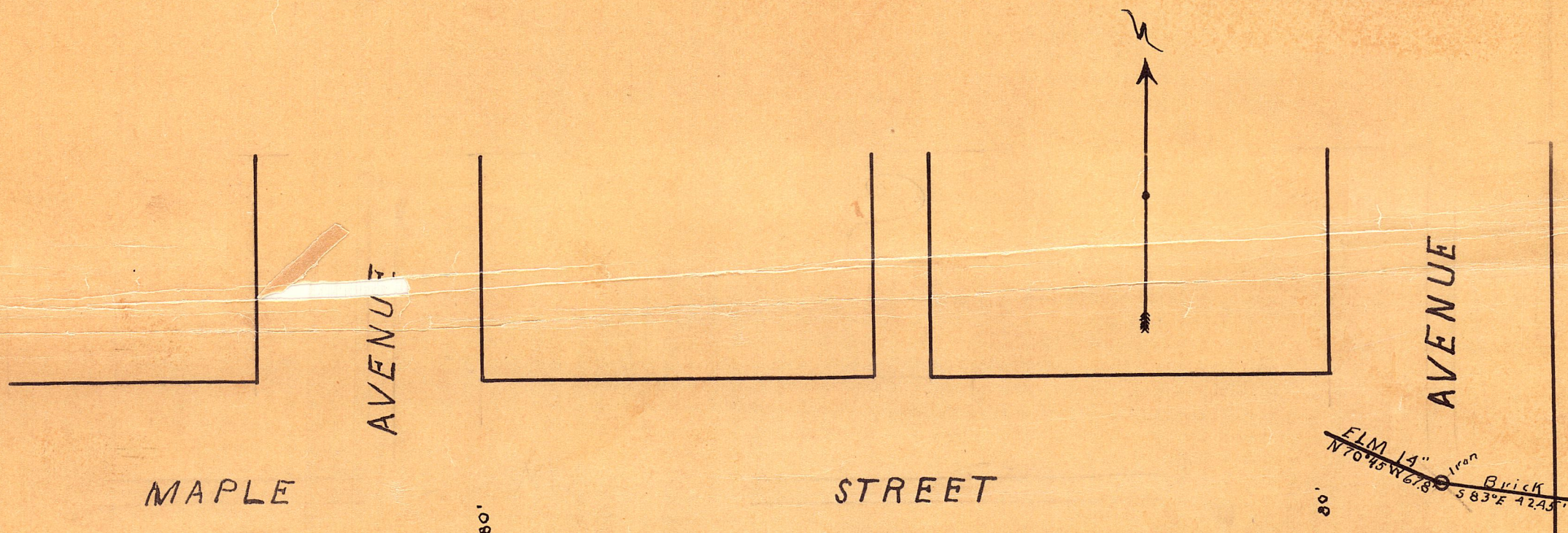


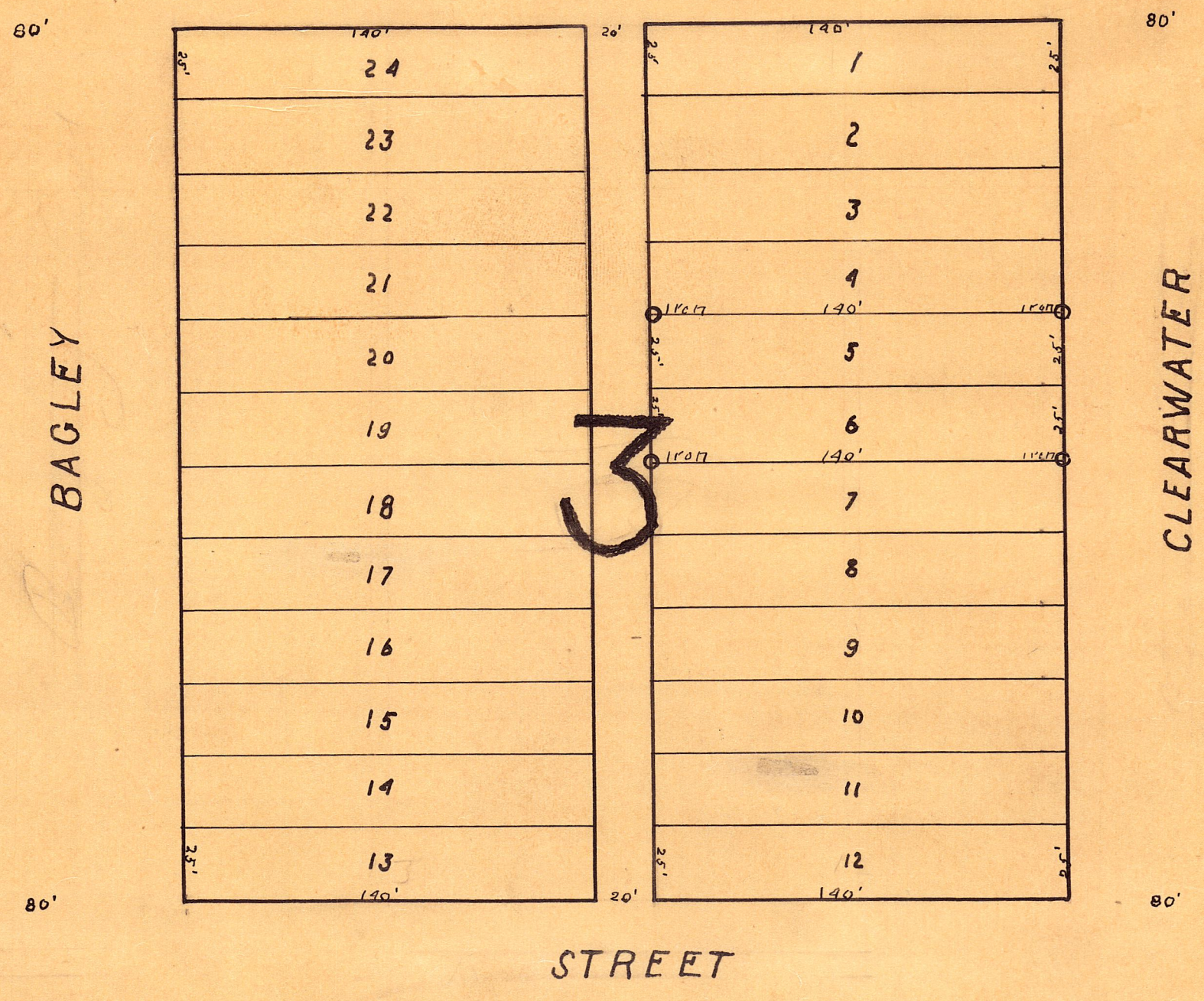
RESURVEY OF
LOTS 5 AND 6 BLOCK 3
GROVENS ADDITION TO BAGLEY
CLEARWATER COUNTY



I hereby Certify
that this plat is a
Correct representation
of Distances and
Monuments as found
by me. Dated this 15th
Day of July, 1937
Harvey A. Cartwright
County Surveyor
Clearwater County
Minnesota

87188

Office of Registrar of Deeds,
County of Clearwater, Minn.
I hereby certify that the within instrument
was filed in this office for record on the
day of October 1937 at 11:30 a.m.
and was duly recorded in Book
100 of page 100
Harvey A. Cartwright
Registrar of Deeds
County



RIVERSIDE STREET

STREET