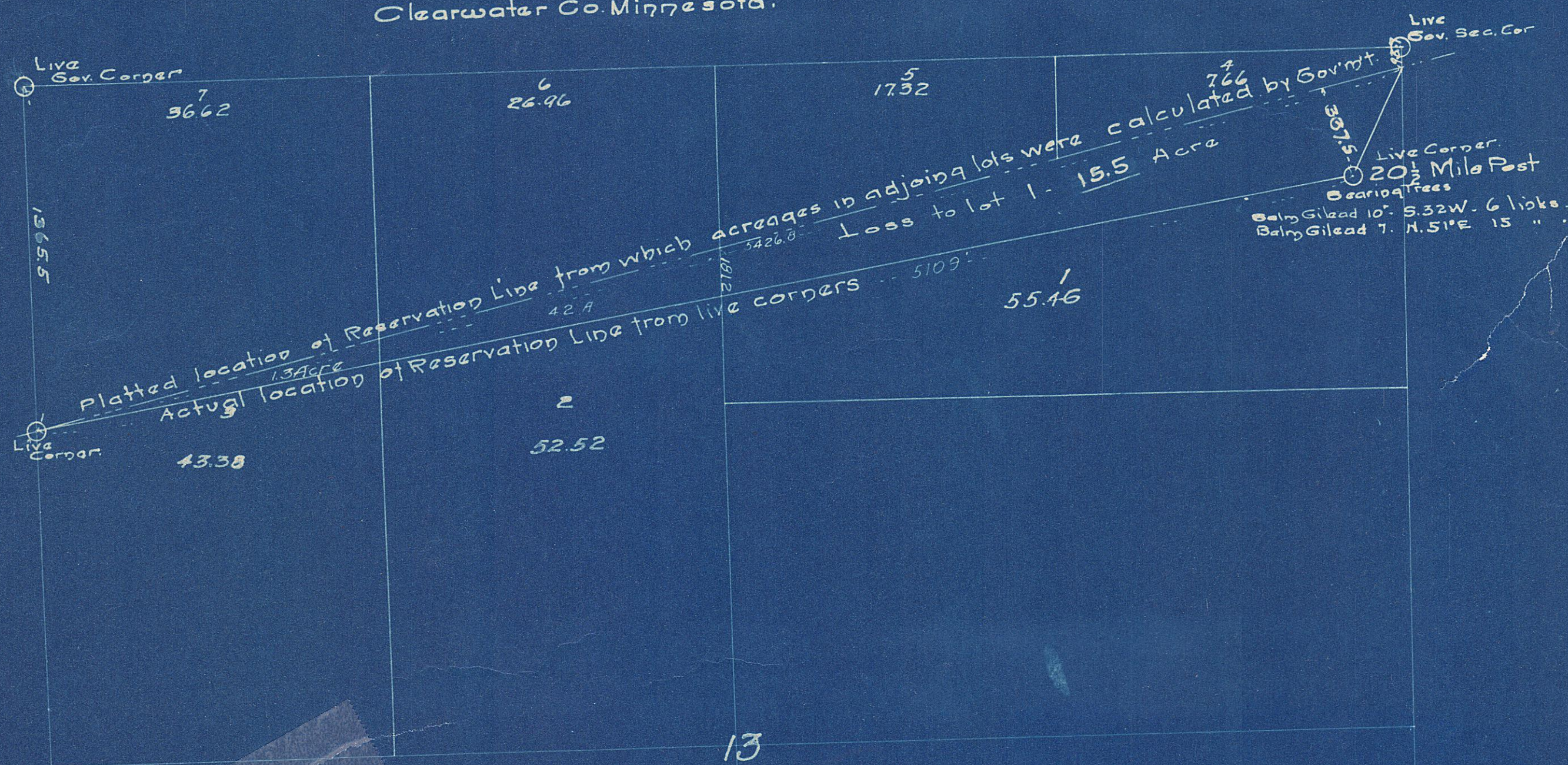


Map of
 RELOCATION OF RED LAKE INDIAN RESERVATION LINE
 SEC. 13.
 T. 147 N. R. 37 W.
 Clearwater Co. Minnesota.



I hereby certify that
 the above plat is a
 correct representation of
 distances and monuments
 as found by me.

Dated this 1st day of July 1922.

Martin Nilhan
 Co. Surveyor.