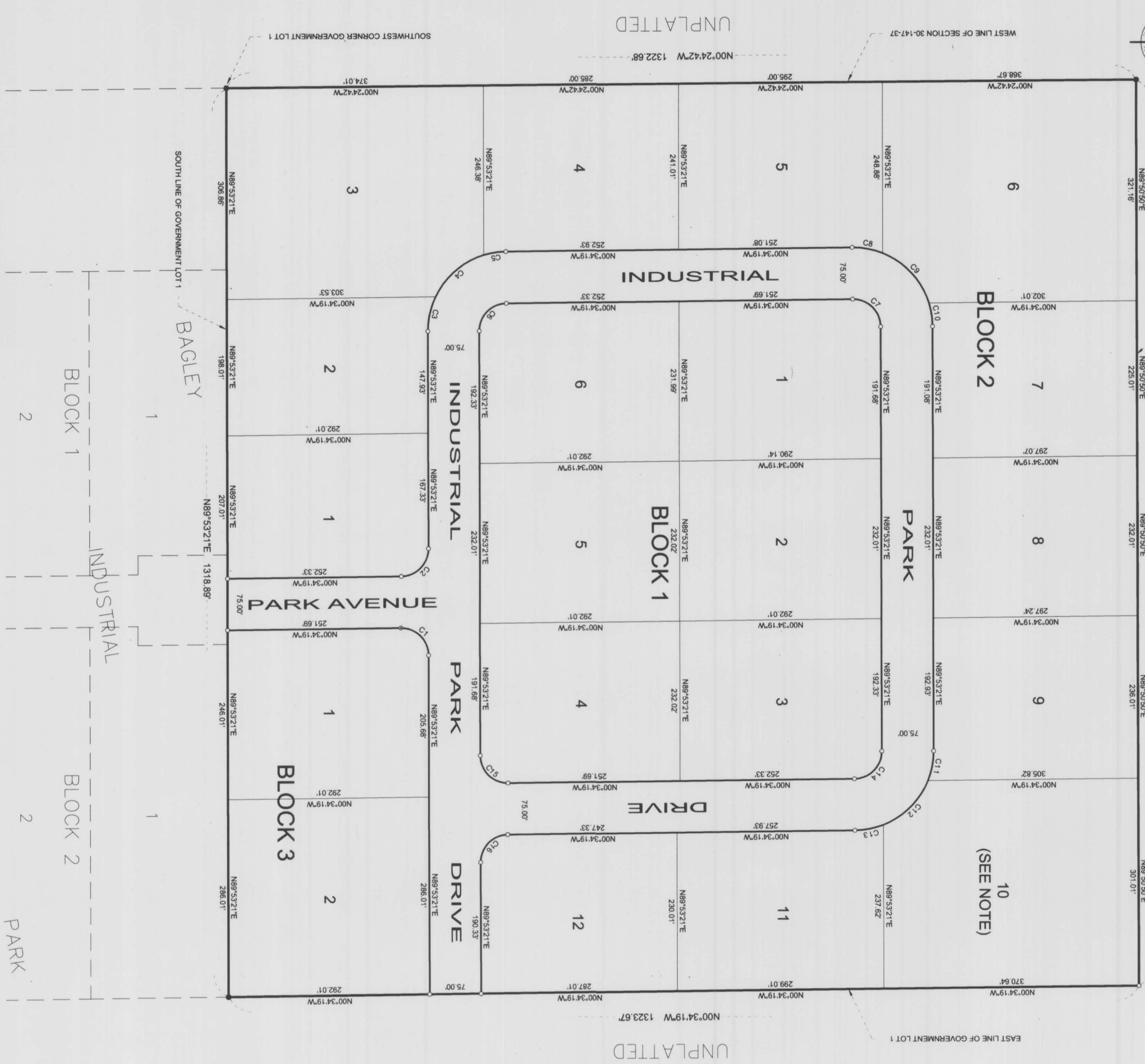


PLAT OF FIRST ADDITION TO BAGLEY INDUSTRIAL PARK CLEARWATER COUNTY, MINNESOTA

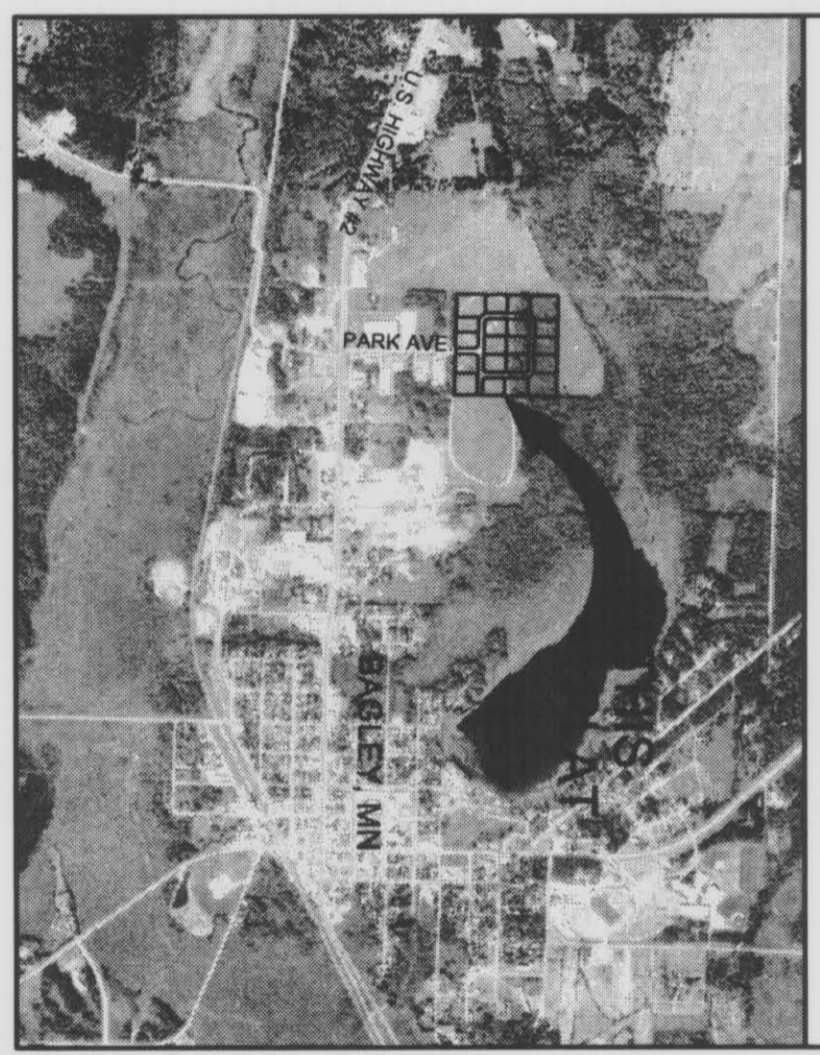


UNPLATTED

UNPLATTED

UNPLATTED

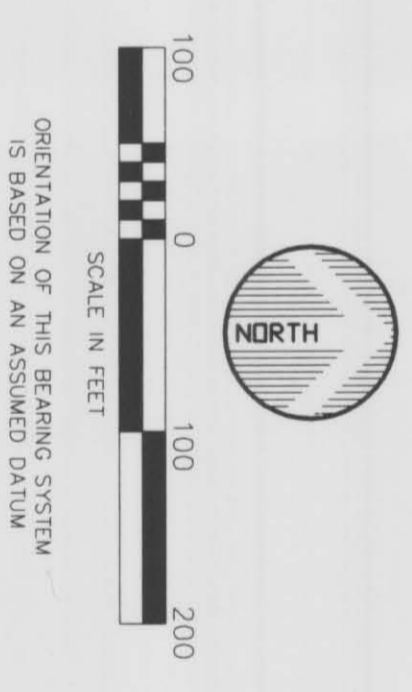
VICINITY MAP



CURVE TABLE

CURVE	LENGTH	RADIUS	DELTA	TANGENT	CHORD
C1	63.15	40.00	90°27'40"	40.32	56.80
C2	62.51	40.00	89°32'20"	39.68	56.34
C3	51.91	115.00	25°51'54"	28.41	51.47
C4	96.26	115.00	47°27'33"	50.55	92.56
C5	32.55	115.00	16°12'53"	16.38	32.44
C6	62.51	40.00	89°32'20"	39.68	56.34
C7	63.15	40.00	90°27'40"	40.32	56.80
C8	45.00	115.00	22°25'06"	22.79	44.71
C9	102.17	115.00	50°54'21"	54.74	98.85
C10	34.40	115.00	17°08'13"	17.33	34.27
C11	44.23	115.00	22°02'03"	22.39	43.95
C12	93.42	115.00	46°32'41"	49.46	90.87
C13	42.07	115.00	20°57'35"	21.27	41.83
C14	62.51	40.00	89°32'20"	39.68	56.34
C15	63.15	40.00	90°27'40"	40.32	56.80
C16	62.51	40.00	89°32'20"	39.68	56.34

*NOTE: LOT 10, BLOCK 2, OF THIS PLAT SHALL BE DESIGNATED AS A STORM WATER RETENTION AREA



- = DENOTES #1 SPARK MONUMENT SET AND WASHED R.S. # 15815
- = DENOTES FOUND IRON MONUMENT
- = DENOTES BOUNDARY OF PLAT
- = DENOTES BOUNDARY OF BLOCK
- = DENOTES LOT LINE

KNOW ALL MEN BY THESE PRESENTS, That the Bagley Industrial Development Corporation, owners and proprietors of the following described property situated in the County of Clearwater, State of Minnesota, to wit:

Government Lot 1, Section 30, Township 147 North, Range 37 West of the Fifth Principal Meridian, Clearwater County, State of Minnesota.

Have caused the same to be surveyed and plotted as FIRST ADDITION TO BAGLEY INDUSTRIAL PARK and to hereby donate and dedicate to the public for public use forever the thoroughfares and public grounds as shown on this plat for access and utility purposes only.

In witness whereof said Bagley Industrial Development Corporation has hereunto set our hands this 2nd day of June 2004.

Allen R. Lindgren
By: *Allen R. Lindgren*

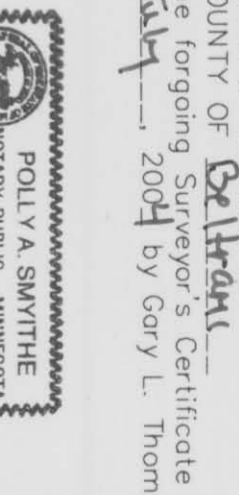
STATE OF Minnesota
COUNTY OF Clearwater



The foregoing instrument was acknowledged before me this 2nd day of June 2004 by
Allen R. Lindgren
Notary Public, Clearwater County, MN
My Commission Expires 1-31-2005

I hereby certify that I have surveyed and plotted the property described on this plat as FIRST ADDITION TO BAGLEY INDUSTRIAL PARK, that this plat is a correct representation of the survey, that all distances are correctly shown on the plat in feet and hundredths of a foot, that all monuments will be correctly placed in the ground as designated, that the outside boundary lines are correctly designated on the plat, and that there are no wetlands as determined in WS 505.02, Subd. 1, or public highways to be designated other than as shown.

STATE OF MINNESOTA
COUNTY OF Clearwater
The foregoing Surveyor's Certificate was acknowledged before me this 30th day of July 2004 by Gary L. Thompson, Minnesota Registration No. 15815.



Gary L. Thompson, Land Surveyor
Minnesota Registration No. 15815

POLLY A. SMYTHIE
MINNESOTA PUBLIC - MINNESOTA
My Comm. Exp. 08/31/2008

Polly A. Smythie
Polly A. Smythie, Clerk

The plat of FIRST ADDITION TO BAGLEY INDUSTRIAL PARK was approved and accepted by the Township Board of Copley, Clearwater County, Minnesota, at a regular meeting thereof held this 2nd day of August 2004.

Allen R. Lindgren
Clerk

The plat of FIRST ADDITION TO BAGLEY INDUSTRIAL PARK was approved and accepted by the Board of County Commissioners of the County of Clearwater, Minnesota, this 10th day of August 2004.

David A. Stucky
Chairperson

No delinquent taxes and transfers entered this 10th day of August 2004.

David A. Stucky
Auditor

I hereby certify that proper evidence of title has been presented to and examined by me this 10th day of August 2004.

Walter D. Forst
Clearwater County Attorney

2004 taxes on the lands described within were paid the 3rd day of August 2004.

Charles R. Olson
Clearwater County Treasurer

Document Number A1447200

I hereby certify that this instrument was filed in the office of the County Recorder for record on this 10th day of August 2004 at 3:00 o'clock P.M. and was duly recorded in Book 134 of Clearwater SA on page 1447200-1.

Allen T. Parkes
Clearwater County Recorder

WIDSETH SMITH NOLTING
ENGINEERS ARCHITECTS
LAND SURVEYORS
ENVIRONMENTAL SERVICES

ALBANY, MINN. 55001
RENO, MINN. 56460
BRANDON, MINN. 56006
CROOKSTON, MINN. 56908
GRAND FORKS, MINN. 58045
WWW.WSNC.COM

"OFFICIAL PLAT"