

**PLAT OF  
FIRST ADD.  
TO  
BAGLEY  
BELTRAMI CO. MINN.**

M.D. STONER, CO. SUR. & C.E.  
Scale 1" = 200 ft.

*Description.* The tract of land designated by the plat contained on this page and so far known as "First Addition to Bagley" is situated in the S. 1/2, E. 1/4, N. 1/2, W. 1/4 and N. 1/2 of the S.W. 1/4 of sec. 29, T. 147 N. of R. 37 W. of 5th P.M. Mer. and more fully described as follows, to wit:

Beginning at a large lamarge stake marked 1/2 placed at the 1/4 corner between the North 1/2 of the fourth and the North East 1/4 of said sec. 29 thence N 89° 52' W along the 1/4 sec. line running through the N.W. 1/4 of said sec. 29 a distance of 2635.65 ft. to the 1/4 cor. on that sec. line between the N.W. 1/4 of said sec. 29 and the N.E. 1/4 of sec. 30 said town and range, thence S 0° 27' E. along the sec. line between said sec. 29 and sec. 30 a distance of 1323.58 ft. to the 1/4 sec. corner between said sec. 29 and sec. 30, west making a deflection angle of 29° a distance of 1258.50 ft. to the intersection with the North boundary of the Great Northern Railway Right of Way, thence N. 62° 43' E. making a deflection angle of 117° 19' along the North boundary of said Right of Way a distance of 7978.70 ft. thence North making a deflection angle of 62° 41' along the West boundary of the townsite of Bagley (according to the official plat on file in the office of the Register of Deeds of Beltrami Co.) a distance of 1779.97 ft. to the North West corner of said townsite of Bagley, thence East along the North boundary of said townsite of Bagley a distance of 1600.00 ft. to the North East corner of said townsite, thence South along the East boundary of said townsite a distance of 963.85 ft. to the intersection with the West boundary of the said Gt. N. Ry. of Way, thence N. 62° 43' E. making a deflection angle of 62° 41' along the North boundary of said Gt. N. Ry. of Way a distance of 786.89 ft. to the intersection with the N.E. 1/4 sec. line in said sec. 29; thence N. 0° 16' W. along the said 1/4 sec. line a distance of 1216.34 ft. to the 1/4 corner between the N.E. 1/4 and N.W. 1/4 of said sec. 29 which was the place of the quarry containing 64.35 acres which are subdivided into blocks, lots, streets, avenues and alleys. The blocks are numbered in large black figures. The lots in small black figures and the dimensions of all lots, streets, avenues and alleys are as shown on plat in small black figures. An iron monument marking a slight curve was buried at the N.E. corner of outlot E, a stone monument marked thus "x" was placed at a point on north boundary of outlot E, 300 ft. West of the N.E. corner of said outlot E; a stone monument was placed at the S.E. corner of Block 13, also at intersection of North boundary of 3rd St. and the sec. line between said sec. 29 and sec. 30, also 1/2 ft. center of the alley at the South side of Block 6 and the North side of Block 1 and other monuments were placed at gov. subdivision corners as shown on plat for the guidance of future surveys.

State of Minnesota }  
County of Beltrami } S.S. I, Marcus D. Stoner, County Surveyor in and for said county and State do hereby certify that the foregoing is a full and true description of the tract of land to be known as "First Addition to Bagley" as surveyed by me in May, 1902, that the plat contained on this page is correct, according to said survey thereof, that the iron and stone monuments were placed at points designated on plat for the guidance of future surveys and that the boundary lines of the lands platted, are correctly shown on the said plat.

Given under my hand this 9th day of Aug. 1902 at Bemidji, Minn.  
Marcus D. Stoner  
County Surveyor of Beltrami Co. Minn.

Know all men by these presents that Almond A. White and Marion L. White his wife owners and proprietors of the above described land to be known as "First Addition to Bagley" have caused the same to be laid out in accordance with the plat contained on this page and we do hereby dedicate to the public and for the public use forever all streets, avenues and alleys as shown shown. In witness whereof we have hereunto set our hands and seals this 9th day of August A.D. 1902 in presence of

Harrietta Glassman }  
M. E. Seary } Witnesses

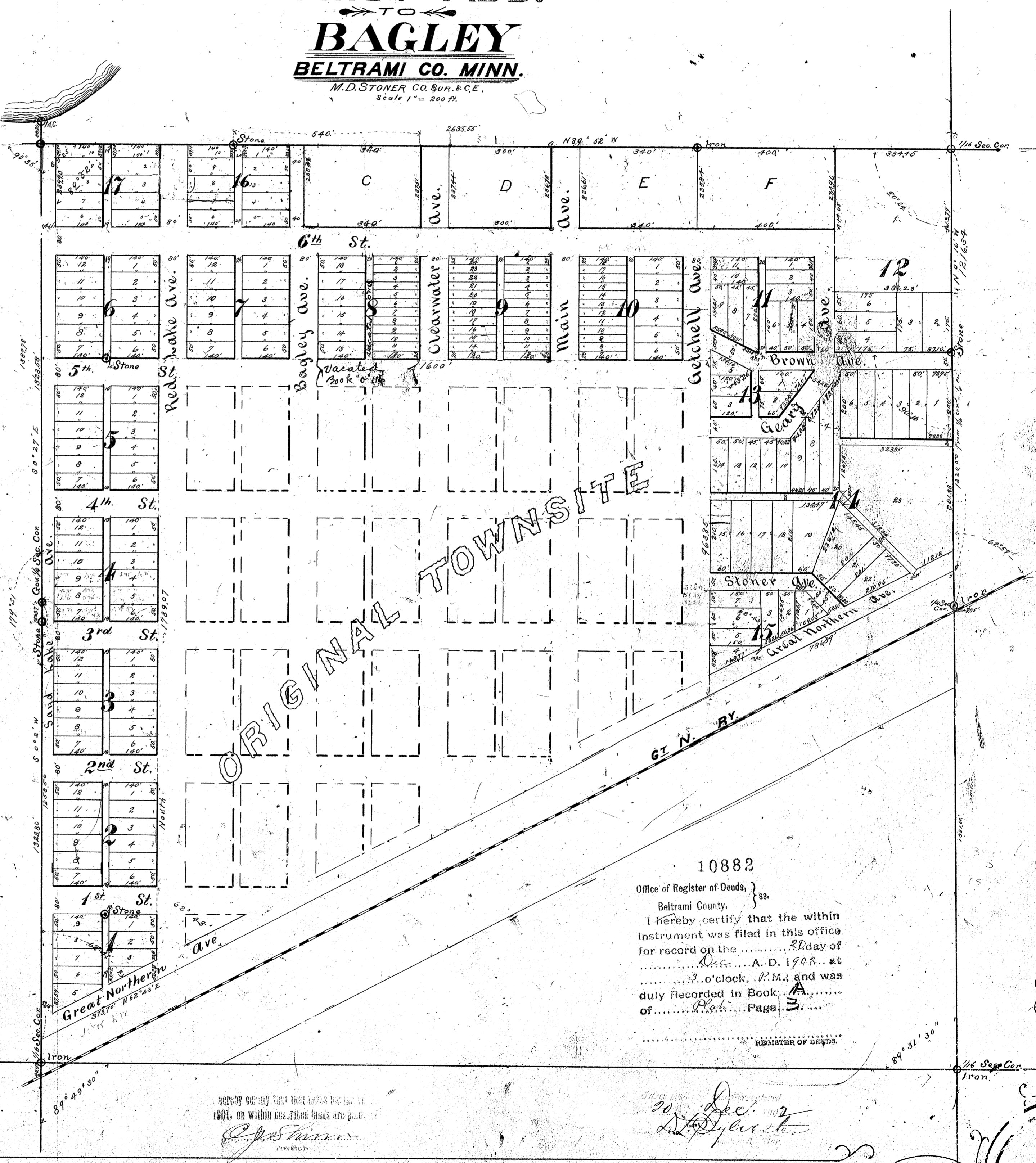
Proprietors } Almond A. White }  
Marion L. White }

State of Minnesota }  
County of Beltrami } S.S. On this 30th day of Aug. 1902, I was personally appeared before me a Notary Public in and for said County and State Almond A. White and Marion L. White his wife to me personally known to be the persons described in and who executed the foregoing instrument and acknowledged that they executed the same freely and voluntarily for the uses and purposes therein expressed.

M. E. Seary  
Notary Public

I hereby certify that at a meeting of the Village Council of the Village of Bagley held on the 20th day of Dec. A.D. 1902 the Plat of First Addition to Bagley was approved and recorded.

W. C. O'Connell  
Recording of the Village of Bagley



10882  
Office of Register of Deeds,  
Beltrami County,  
I hereby certify that the within instrument was filed in this office for record on the ..... day of ..... A.D. 1902, at ..... o'clock, P.M., and was duly recorded in Book ..... of ..... Plat ..... Page .....  
Register of Deeds

20 Dec. 1902  
D. P. ...