

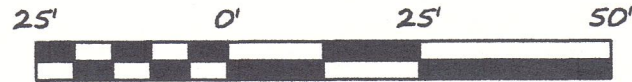
CERTIFICATE OF SURVEY

KNOWLES

PART OF BLOCK 4, SECOND ADDITION TO BAGLEY
CLEARWATER COUNTY, MINNESOTA



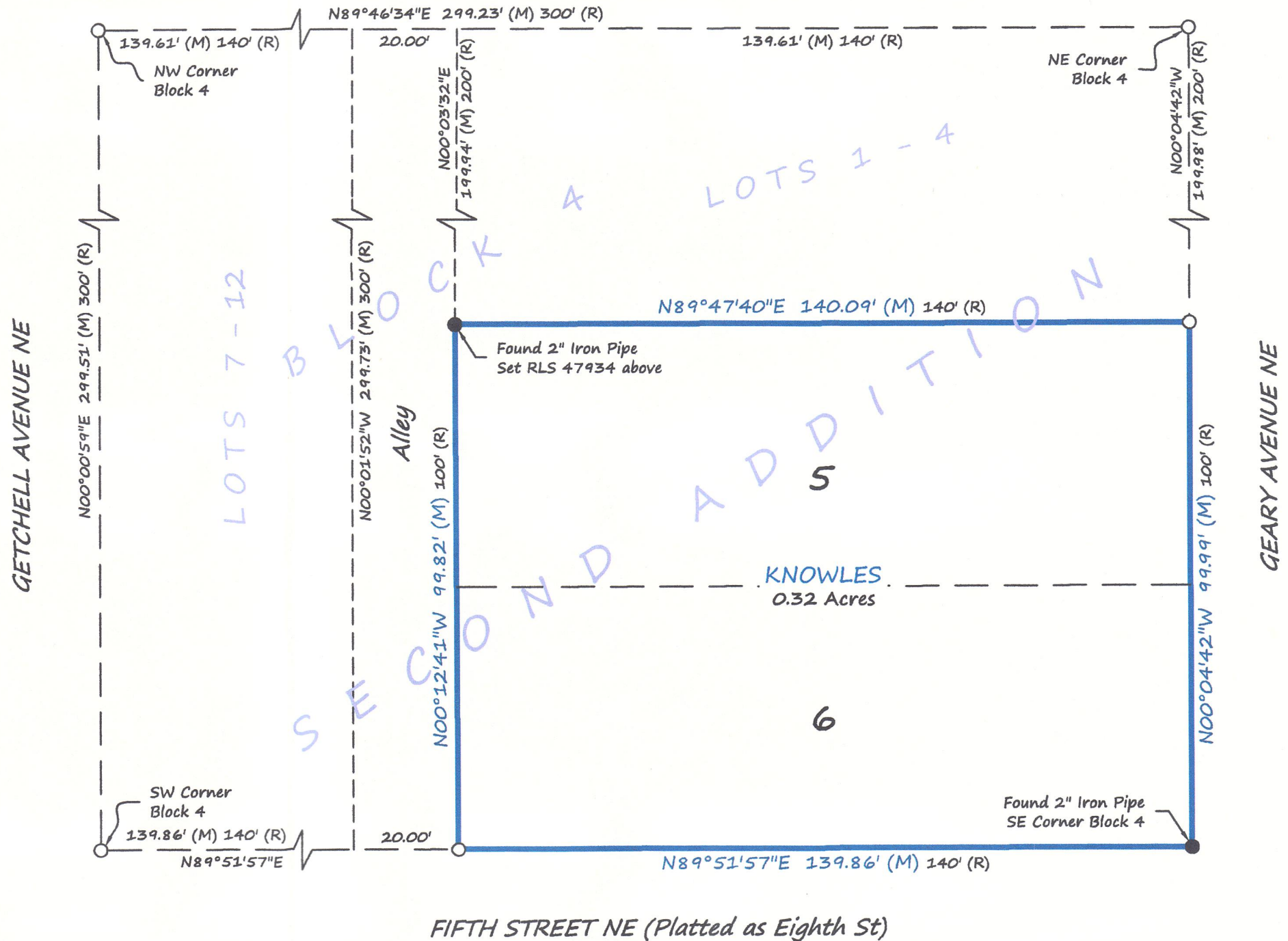
SCALE
1" = 25'



BEARINGS ARE BASED ON NAD83(96)
CLEARWATER COUNTY COORDINATE SYSTEM

LEGEND

- FOUND IRON MONUMENT
- SET IRON MONUMENT WITH CAP NO. 47934
- (M) DENOTES MEASUREMENT PER BRUSTAD LAND SURVEYING
- (R) DENOTES MEASUREMENT PER SECOND ADDITION TO BAGLEY
- PROPERTY BOUNDARY
- - - - - PLATTED BLOCK LINES
- - - - - PLATTED LOT LINES



DESCRIPTION PER RECORD DOCUMENT 140916:

Lots Five (5) and Six (6), Block Four (4), Second Addition to Bagley, according to the plat thereof on file and of record in the office of the County Recorder, Clearwater County, Minnesota

Brustad Land Surveying
Bagley, Mn 56621 (218) 694-5280

I HEREBY CERTIFY THAT THIS SURVEY, PLAN OR REPORT WAS PREPARED BY ME OR UNDER MY DIRECT SUPERVISION AND THAT I AM A DULY LICENSED LAND SURVEYOR UNDER THE LAWS OF THE STATE OF MINNESOTA.

Amanda J. Brustad 6/9/17
AMANDA J. BRUSTAD (LIC. NO. 47934) DATE: