

MINNESOTA DEPARTMENT OF TRANSPORTATION
 RIGHT OF WAY PLAT NO. 15-3
 CONTROL SECTION NO. 1500 (TWS) 000 MICROWAVE TOWER SITE NO. TEC 334
 IN THE NORTHWEST QUARTER OF SECTION 20, T. 150 N., R. 37 W.,
 CLEARWATER COUNTY, MINNESOTA

RIGHT OF WAY IN SECTION 20					
PARCEL	OWNER	LOCATION	TOWER	PERMANENT	
			SITE	R/W	
		ACRES OR LESS	ACRES OR LESS	EXPIRES	INTEREST
3	D & D PROPERTIES	NW1/4 NW1/4	0.41	1.25	12/1/2018 EASEMENT

THE COMMISSIONER OF TRANSPORTATION IS HEREBY DESIGNATING THE DEFINITE LOCATION OF MICROWAVE TOWER SITE NO. 000 AS ACQUIRED FOR MICROWAVE TOWER SITE PURPOSES.

As shown on this plat prepared by the State of Minnesota Department of Transportation is hereby certified as the location of the tower site for the tower site shown on this plat. The tower site is located in the Northwest Quarter of Section 20, T. 150 N., R. 37 W., Clearwater County, Minnesota, Section 161.18.

It is further ordered that it is necessary to acquire all trees, shrubs, grass and herbage within the right of way of said Microwave Tower Site, and to keep and have the exclusive control of the same.

Commissioner's Order No. 97352 Location PLAT 15-3 Nature of Interest Definite location and access of Microwave Tower Site

Certified by: *Charles A. Reilly*
 Commissioner of Transportation
Steve Jones
 Assistant Director of Land Management

Date: *4/19/18*
 License No. *44606*
 Date *4-9-2018*

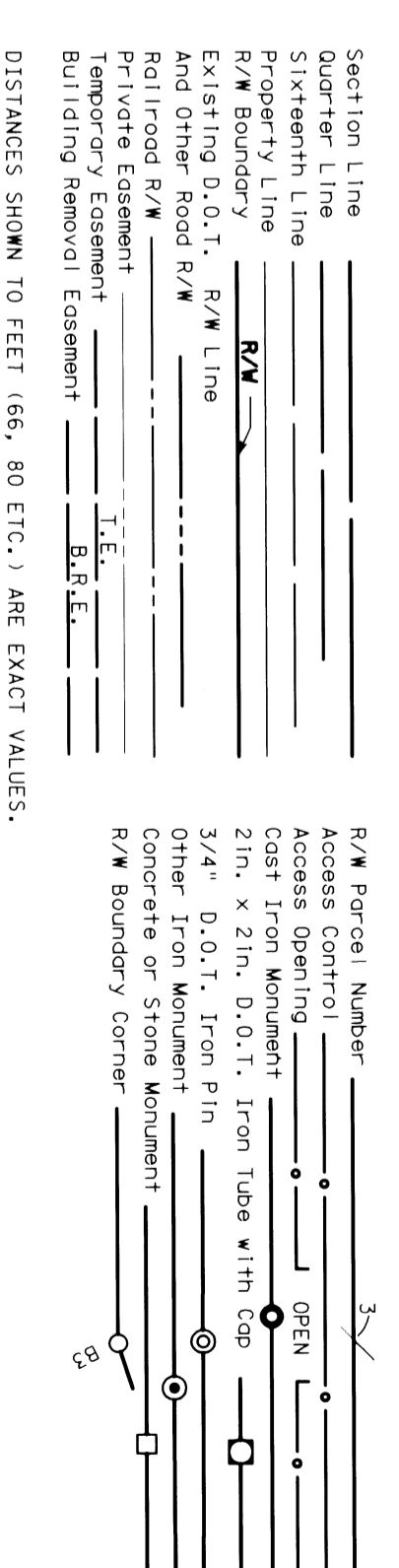
I hereby certify that this plat was surveyed and prepared by me or under my direct supervision and that I am a duly Licensed Land Surveyor under the Laws of the State of Minnesota. I have read the plat and the accompanying data and certify that the same are correct and true to the best of my knowledge and belief. I have also read the plat and the accompanying data and certify that the same are correct and true to the best of my knowledge and belief. I have also read the plat and the accompanying data and certify that the same are correct and true to the best of my knowledge and belief. I have also read the plat and the accompanying data and certify that the same are correct and true to the best of my knowledge and belief.

Certified by: *Kyle Klues*
 Kyle Klues
 Professional Land Surveyor License No. *44606* Date *4-9-2018*

- SURVEY STANDARDS
1. The plot values, azimuths, and distances are based on the county coordinate survey system.
 2. The boundary monuments shown on this plat have been field checked for location. The standard deviation for the monument position is 0.10 feet.
 3. The county coordinates shown on one monument are based on ties to national control monuments.
 4. Office for the section corner monuments shown on this plat.

FROM	TO	DISTANCE (FT)	AZIMUTH
B1	B2	64.37	180°33'42"
B2	B3	92.00	270°33'42"
B3	B4	125.00	180°33'42"
B4	B5	125.00	90°33'42"
B5	B6	189.35	0°33'42"
B6	B1	33.00	270°35'44"

CONVENTIONAL SYMBOLS



DOC. NO. A172007

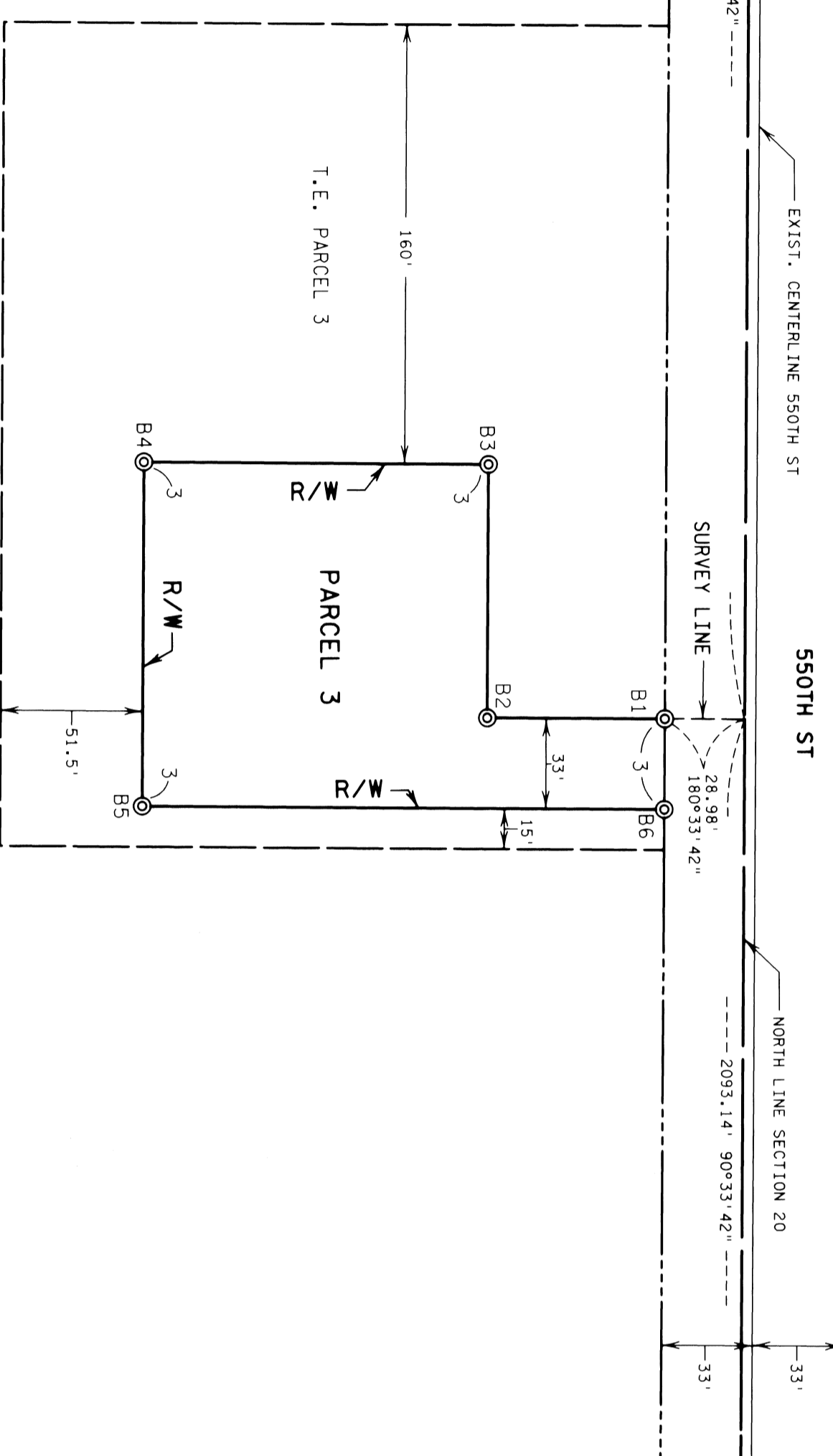
OFFICE OF COUNTY RECORDER
 CLEARWATER COUNTY, MINN.
 I HEREBY CERTIFY THAT THIS PLAT HAS BEEN FILED IN THIS OFFICE ON *April 19, 2018* AT *4:30 PM* IN CAB. *A of Plat* Slide No. *202*
Charles Klues
 COUNTY RECORDER

CLEARWATER COUNTY
 COORDINATES
 X=488626.686
 Y=33871996.8
 NAD 83 (1996 ADU.)

3/4 INCH IRON PIN WITH ALUMINUM CAP AT QUARTER CORNER

SW1/4 - SW1/4

1/2 INCH IRON PIPE WITH CAP 44606 AT QUARTER CORNER



NW1/4 - NW1/4

3/4 INCH IRON PIN WITH ALUMINUM CAP AT QUARTER CORNER



PLAT NO. 15-3
 C.S. 1500 (TWS) 000
 MICROWAVE TOWER SITE NO. TEC 334