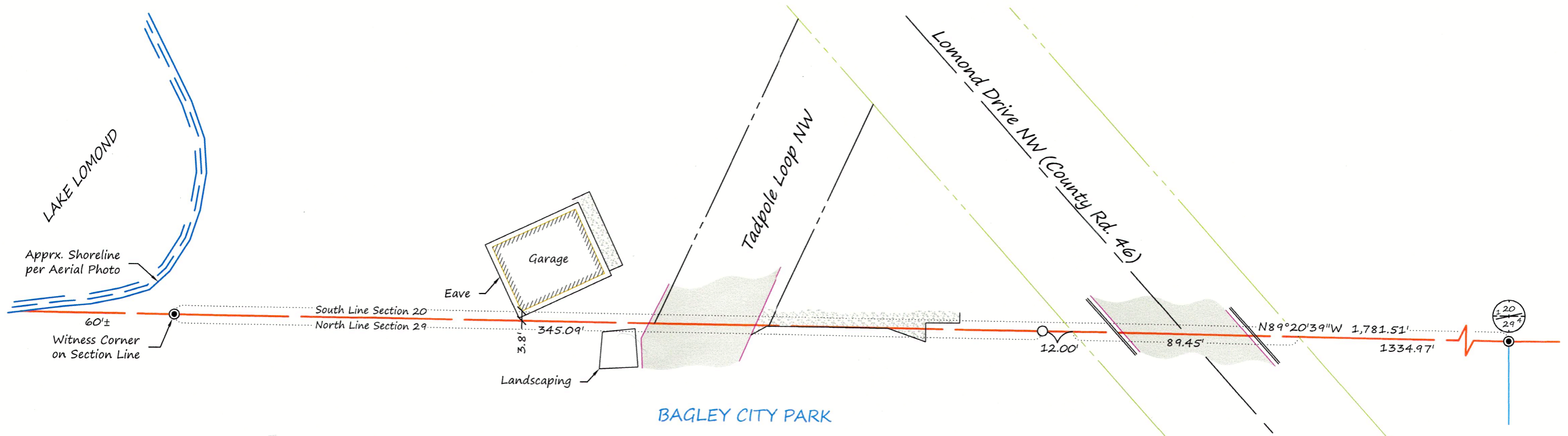


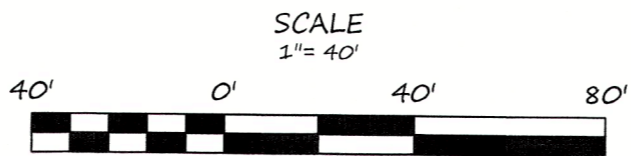
# CERTIFICATE OF SURVEY BAGLEY CITY PARK

SECTION 29, TOWNSHIP 147 NORTH, RANGE 37 WEST  
CLEARWATER COUNTY, MINNESOTA

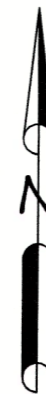


## LEGEND

- FOUND CERTIFIED GOVERNMENT CORNER
- SET IRON MONUMENT WITH CAP NO. 47934
- — — — — CENTERLINE
- — — — — RIGHT-OF-WAY
- — — — — QUARTER-LINE
- — — — — SECTION-LINE
- — — — — CURB & GUTTER
- — — — — APPRX. SHORE LINE
- — — — — BITUMINOUS SURFACE
- — — — — CONCRETE SURFACE
- — — — — BUILDING WITH EAVES



BEARINGS ARE BASED ON NAD83(96)  
CLEARWATER COUNTY COORDINATE SYSTEM



### SURVEYOR'S NOTES:

1. Section Subdivision per Coordinates on Government Corner Certificates on file at the County Recorder's Office. Brustad Land Surveying verified Section Corners in the field.
2. Brustad Land Surveying has not made a thorough search for any easements of records or any other information that a current title search may disclose.

**BRUSTAD LAND SURVEYING, PA**  
Bagley, Mn 56621 (218) 694-5280

I HEREBY CERTIFY THAT THIS SURVEY, PLAN OR REPORT WAS PREPARED BY ME OR UNDER MY DIRECT SUPERVISION AND THAT I AM A DULY LICENSED LAND SURVEYOR UNDER THE LAWS OF THE STATE OF MINNESOTA.

*Amanda J. Brustad* 9/22/23  
AMANDA J. BRUSTAD (LIC. NO. 47934) DATE: