

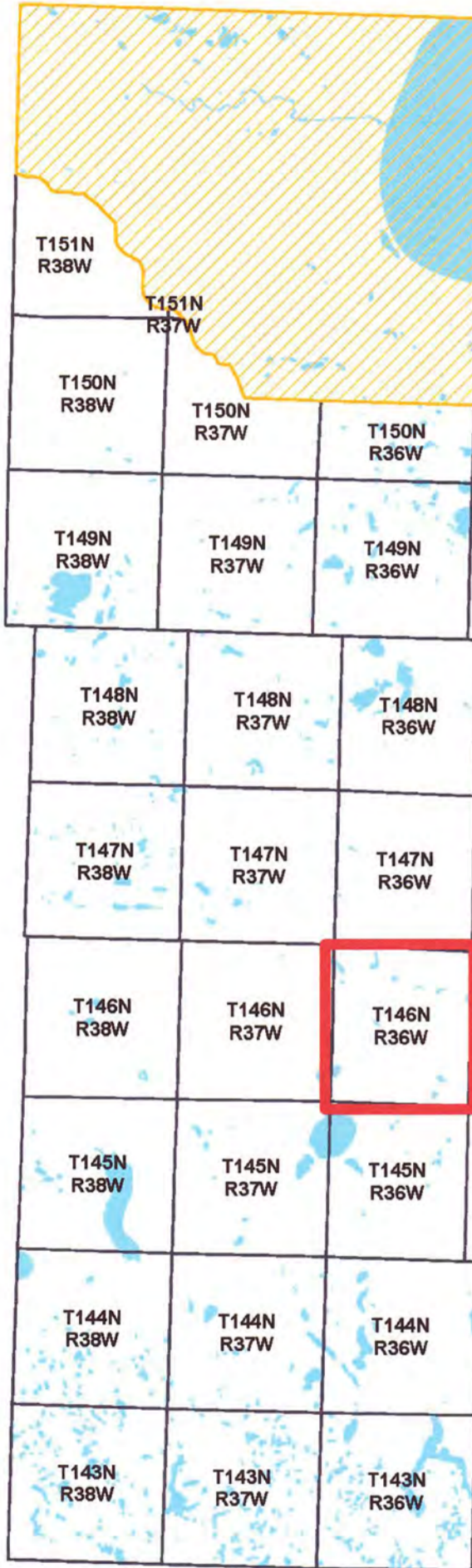
Certificate of Survey

T.146N.-R.36W.

Moose Creek Township

Clearwater County,

Minnesota



Legend

- PLS Corners
- PLS Corners Others
- Existing PLS Corners (Non-Contracted)
- PLS Lines
- PLS Lines to Existing Corners
- Lakes

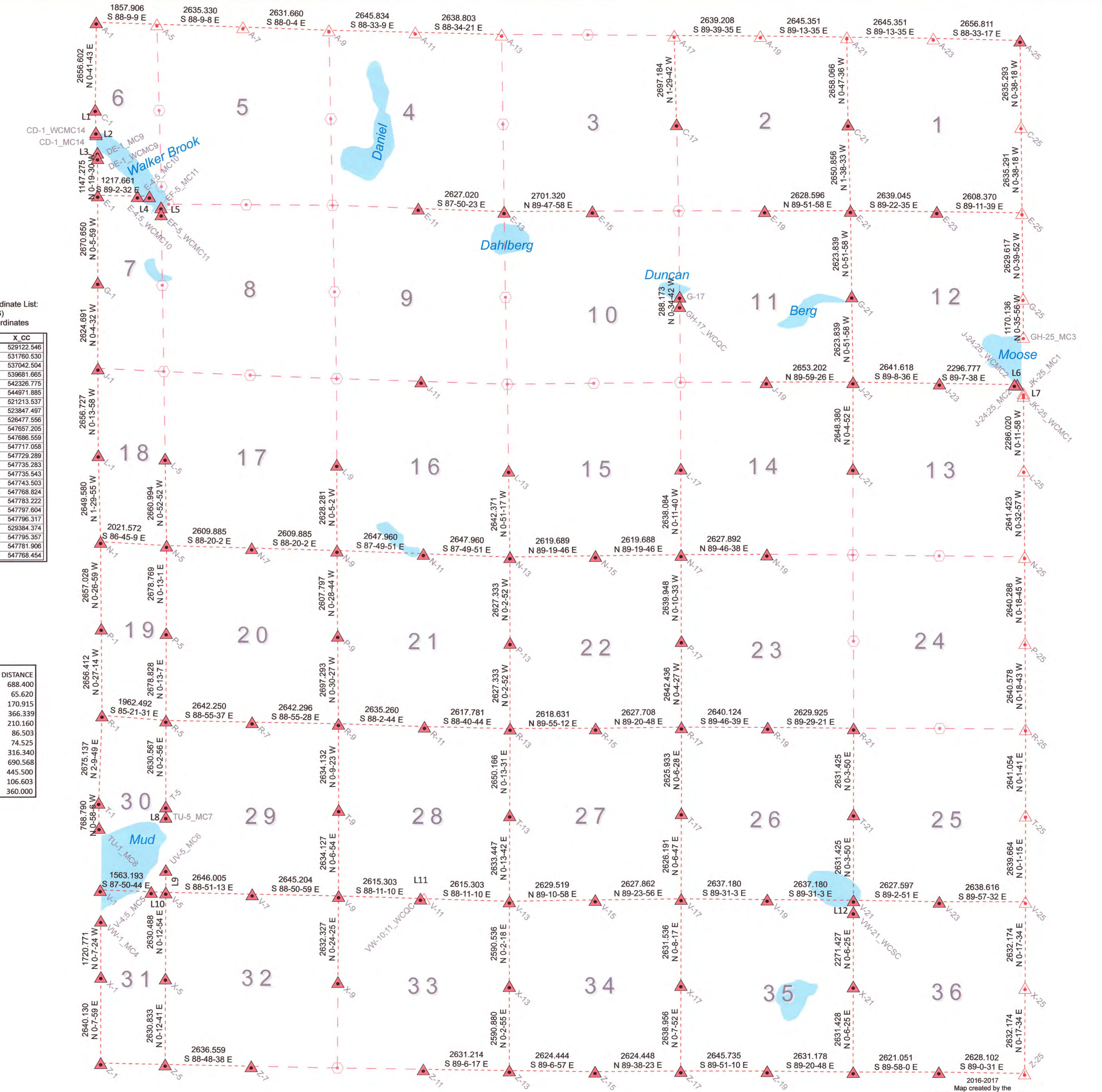
PLS Corners Coordinate List:
NAD 1983 (1996)
Clearwater County Coordinates

INDEX	Y_CC	X_CC
A-1	227322.923	519356.597
A-25	226756.094	547627.851
C-1	224666.517	519324.357
C-17	224213.953	537112.876
C-21	224201.017	542363.573
CD-1_MC14	223912.809	519346.063
CD-1_WCMC14	223978.402	519344.174
DE-1_MC9	223350.529	519391.233
DE-1_WCMC9	223179.617	519392.202
E-1	222032.360	519398.707
E-11	221635.011	529212.356
E-13	221535.984	531837.509
E-15	221545.443	534538.812
E-19	221545.112	539810.969
E-21	221551.250	542439.558
E-23	221522.522	545078.447
E-4-5_MC10	222005.881	520982.486
E-4-5_WCMC10	222012.005	520616.198
EF-5_MC11	221670.911	521337.492
EF-5_WCMC11	221460.782	521341.079
G-1	219361.714	519403.357
G-17	218922.937	537208.904
G-21	218927.711	542479.223
GH-17_WCQC	218634.779	537211.813
J-1	216737.025	519406.817
J-11	216335.935	529300.779
J-19	216303.734	539865.687
J-21	216304.172	542518.889
J-23	216264.680	545160.212
J-24-25_MC2	216228.380	547543.216
J-24-25_WCMC2	216229.698	547456.723
L-1	214080.320	519417.609
L-13	213606.992	531975.498
L-17	213664.309	537244.980
L-21	213655.795	542515.145
L-25	213977.806	521464.307
L-9	213793.652	526718.940
N-1	211431.646	519486.900
N-11	211065.145	529368.852
N-13	210964.915	520214.914
N-15	210959.578	534634.424
N-16	211026.240	537253.933
N-19	211036.459	539881.805
N-5	211317.127	521505.226
N-7	211241.251	524114.008
N-9	211165.374	526722.790
P-1	208774.700	519507.761
P-13	208337.583	532017.102
P-17	208386.304	537262.035
P-5	208638.377	521495.083
P-9	208557.668	526744.584
R-1	206118.371	519528.805
R-11	205770.606	529402.205
R-13	205710.251	532019.290
R-15	205713.905	534637.918
R-17	205743.870	537265.455
R-19	205733.620	539905.559
R-21	205710.176	542535.380
R-5	205959.569	521484.861
R-7	205910.083	524126.648
R-9	205860.481	526768.478
T-1	203445.141	519427.811
T-13	203060.106	532008.866
T-17	203117.941	537260.521
T-21	203078.753	542532.444
T-5	203329.003	521482.614
T-9	203226.359	526775.670
TU-1_MC8	202676.461	519440.803
TU-5_MC7	203012.663	521482.328
UV-5_MC6	201388.853	521480.860
V-1	200773.803	519472.962
V-13	200426.680	531998.367
V-15	200464.184	534627.619
V-17	200491.755	537253.336
V-19	200469.542	539892.422
V-21	200447.330	542529.508
V-23	200403.652	545156.742
V-4-5_MC5	200715.034	521035.050
V-5	200698.285	521480.235
V-7	200645.344	524125.710
V-9	200592.237	526770.381
VW-1_MC4	199838.837	519488.765
VW-10-11_WCQC	200512.540	529277.816
VW-21_WCSC	200087.331	542528.837
X-1	198118.070	519492.470
X-13	197836.145	531996.629
X-17	197860.227	537248.994
X-21	197815.908	542524.601
X-5	198067.816	521470.361
X-9	197959.976	526751.688
Z-1	195477.947	519486.333
Z-11	195286.380	529363.540
Z-13	195245.266	531994.433
Z-15	195204.772	534618.565
Z-17	195221.278	537242.961
Z-19	195214.482	539888.687
Z-21	195184.485	542519.694
Z-23	195182.959	545140.745
Z-5	195437.001	521460.650
Z-7	195382.265	524096.641

PLS Corners Others Coordinate List:
NAD 1983 (1996)
Clearwater County Coordinates

INDEX	Y_CC	X_CC
A-11	227019.432	529122.546
A-13	226953.690	531760.530
A-17	226910.219	537042.504
A-19	226894.547	539681.665
A-21	226868.828	542326.775
A-23	226823.110	544971.885
A-5	227263.021	521213.537
A-7	227178.053	523847.497
A-9	227086.265	526477.556
C-25	224120.964	547657.205
E-25	221485.836	547686.559
G-25	218856.396	547717.058
GH-25_MC3	217686.324	547729.289
JK-25_MC1	215965.102	547735.283
JK-25_WCMC1	215890.577	547735.543
L-25	213604.571	547743.503
N-25	210963.269	547768.824
P-25	208323.020	547783.222
R-25	205682.481	547797.604
T-25	203041.427	547796.317
V-11	200509.459	529384.374
V-25	200401.763	547795.357
X-25	197769.623	547781.906
Z-25	195137.483	547768.454

LINE	DIRECTION	DISTANCE
L1	N 01-38-59 W	688.400
L2	N 01-38-59 W	65.620
L3	N 00-19-30 W	170.915
L4	S 89-02-32 E	366.339
L5	N 00-58-41 W	210.160
L6	S 89-07-38 E	86.503
L7	N 00-11-58 W	74.525
L8	N 00-03-07 E	316.340
L9	N 00-03-07 E	690.568
L10	S 87-50-44 E	445.500
L11	S 88-20-37 E	106.603
L12	N 00-06-25 E	360.000



I HEREBY CERTIFY THAT THIS PLAN, SURVEY OR REPORT WAS PREPARED BY ME OR UNDER MY DIRECT SUPERVISION AND THAT I AM A DULY REGISTERED LAND SURVEYOR UNDER THE LAWS OF THE STATE OF MINNESOTA.

JAMES KRAMER
DATE: 10/31/2017 RLS NO. 23668

