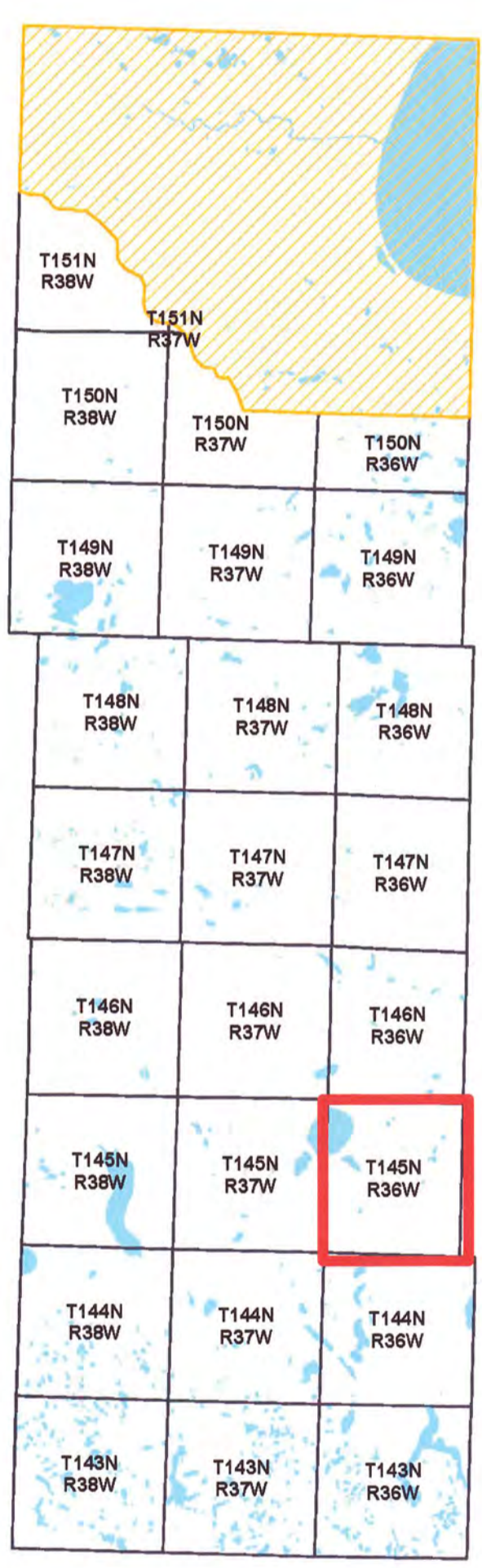




Certificate of Survey T.145N.-R.36W. Bear Creek Township Clearwater County, Minnesota



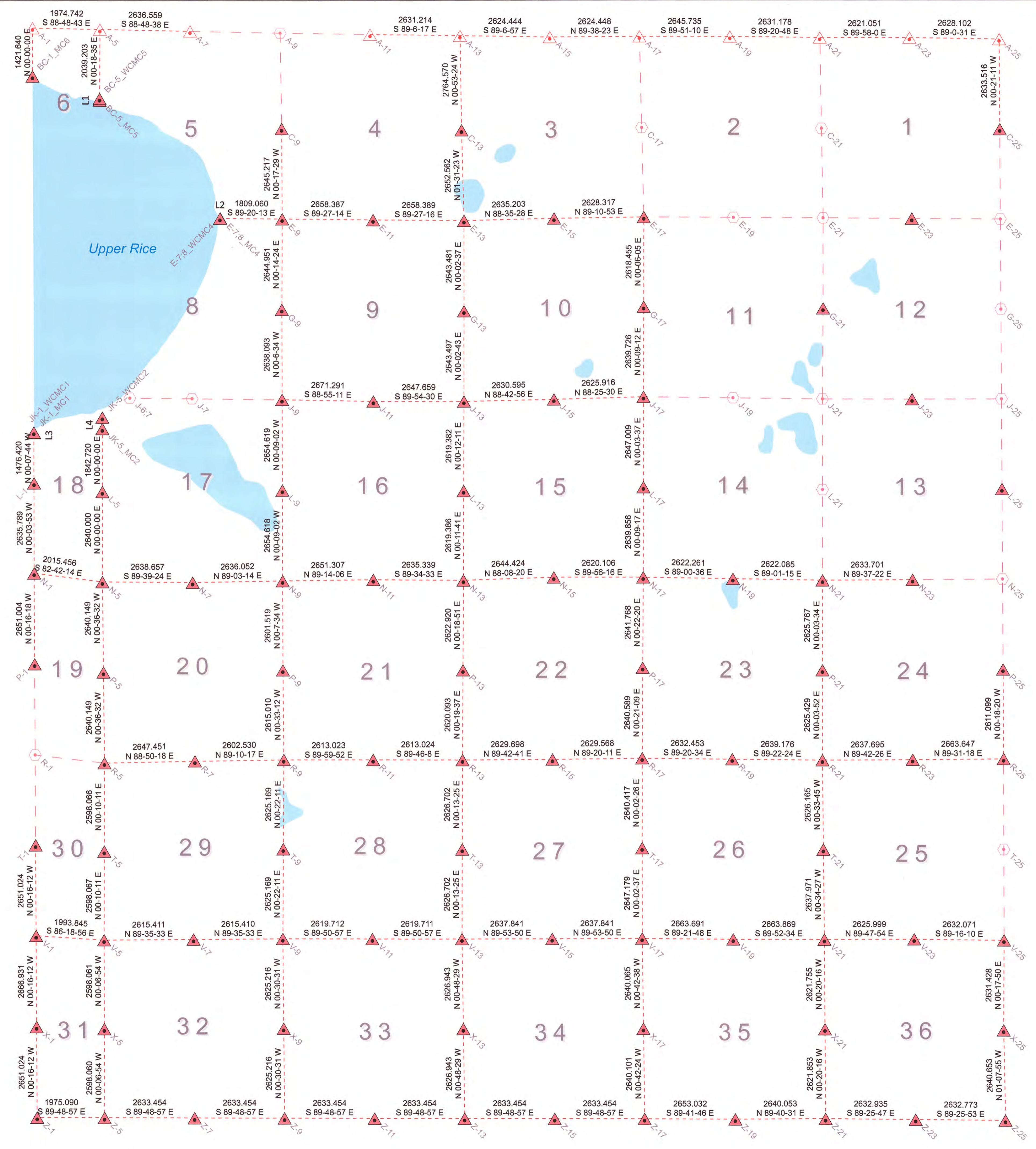
PLS Corners Coordinate List:
NAD 1983 (1996)
Clearwater County Coordinates

Index	Y_CC	X_CC
BC-1_MC8	194056.307	519486.333
BC-5_WCMC5	193350.607	521440.374
BC-5_WCMC5	193357.828	521440.628
C-13	192481.029	532037.373
C-25	192504.017	547784.684
C-9	192525.225	526777.884
E-11	189854.710	529449.601
E-13	189829.404	532107.870
E-15	189894.192	534742.276
E-17	189931.740	537370.325
E-23	189888.587	545207.321
E-7.8_MC4	189900.978	524982.396
E-7.8_WCMC4	189901.109	524971.043
E-9	189880.042	526791.335
G-13	187185.924	532105.852
G-17	187398.329	537365.662
G-21	187282.844	542811.466
G-9	187235.114	526780.253
J-11	184546.660	529456.111
J-13	184542.428	532103.767
J-15	184601.394	534733.701
J-17	184673.572	537358.625
J-23	184604.529	545213.046
J-9	184597.000	526785.295
JK-1_MC1	183828.254	519519.507
JK-1_WCMC1	183843.254	519519.473
JK-5_MC2	183742.815	521524.943
JK-5_WCMC2	184074.815	521524.943
L-1	182151.838	519522.829
L-13	181628.262	529294.496
L-17	182028.564	537355.845
L-25	181970.530	547845.288
L-5	181900.095	521524.943
L-9	181942.416	526792.271
N-1	179516.051	519525.806
N-11	179233.204	529450.317
N-13	179303.691	532085.584
N-15	179389.589	534723.613
N-17	179386.718	537348.717
N-19	179341.409	539970.587
N-21	179296.596	542592.289
N-23	179313.940	545225.933
N-5	179290.095	521524.943
N-7	179248.278	524163.553
N-9	179187.807	526790.246
P-1	176865.077	519538.377
P-13	176680.610	532071.200
P-17	176745.006	537331.550
P-21	176670.830	542589.559
P-25	176692.171	547873.895
P-5	176620.095	521553.000
P-9	176688.294	526804.966
R-11	174071.303	529443.245
R-13	174060.760	532056.248
R-15	174074.010	534885.913
R-17	174104.467	537315.305
R-19	174074.270	539947.585
R-21	174045.403	542595.803
R-23	174088.878	545224.264
R-25	174081.109	547867.818
R-5	173960.095	521561.057
R-7	174033.771	524227.964
R-9	174071.408	526830.222
T-1	171563.109	519563.444
T-13	171434.078	532046.002
T-17	171464.051	537313.439
T-21	171419.385	542812.387
T-5	171382.040	521573.360
T-9	171446.292	526813.286
V-1	168912.114	519575.938
V-11	168814.287	529410.054
V-13	168807.396	532035.796
V-15	168812.134	534873.593
V-17	168816.873	537311.430
V-19	168787.281	539974.957
V-21	168781.526	542598.820
V-23	168790.767	545264.803
V-25	168797.202	547869.660
V-5	168783.984	521565.862
V-7	168802.591	524181.007
V-9	168821.178	526796.351
X-1	166245.213	519568.508
X-13	166180.714	532072.799
X-17	166177.011	537344.168
X-21	166159.817	542584.278
X-25	166125.809	547865.036
X-5	166185.928	521570.812
X-9	166196.065	526819.657
Z-1	163594.218	519601.003
Z-11	163562.492	529476.403
Z-13	163554.032	532109.843
Z-15	163545.571	534743.283
Z-17	163537.111	537376.723
Z-19	163523.043	542029.718
Z-21	163538.010	542969.729
Z-23	163511.803	545302.534
Z-25	163485.671	547935.177
Z-5	163567.873	521576.083
Z-7	163576.412	524209.523
Z-9	163570.952	526842.963

PLS Corners Others Coordinate List:
NAD 1983 (1996)
Clearwater County Coordinates

INDEX	Y_CC	X_CC
A-1	195477.947	519486.333
A-11	195288.380	529363.540
A-13	195245.266	531994.433
A-15	195004.712	534616.566
A-17	195221.278	537242.961
A-19	195214.482	539888.687
A-21	195184.485	542519.694
A-23	195182.959	545140.745
A-25	195137.483	547768.454
A-5	195437.001	521460.650
A-7	195362.295	524096.641

LINE	DIRECTION	DISTANCE
L1	N 00-18-34 W	47.022
L2	S 89-20-13 E	11.354
L3	N 00-07-48 W	15.000
L4	N 00-00-00 E	332.000



Legend

- PLS Corners
- PLS Corners Others
- Existing PLS Corners (Non-Contracted)
- PLS Lines
- PLS Lines To Existing Corners
- Lakes

I HEREBY CERTIFY THAT THIS PLAN, SURVEY OR REPORT WAS PREPARED BY ME OR UNDER MY DIRECT SUPERVISION AND THAT I AM A DULY REGISTERED LAND SURVEYOR UNDER THE LAWS OF THE STATE OF MINNESOTA.

James Kramer
JAMES KRAMER

10/31/2019 23668
DATE RLS NO.

