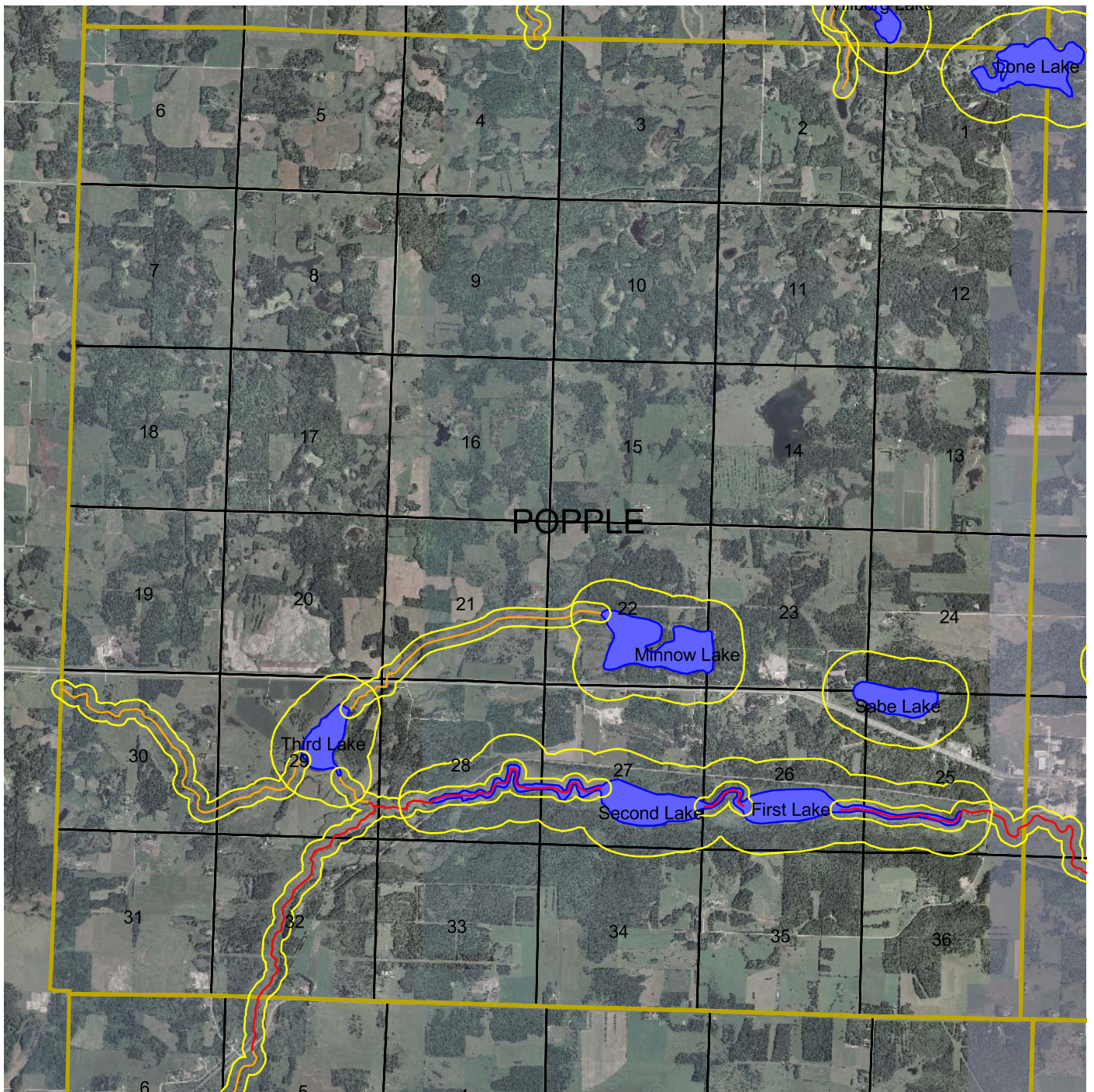
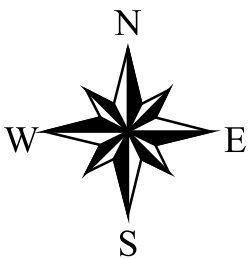


Popple Township



Shoreland Management Zone

- | | | | |
|-------------------|--|----------------------------|--------------------------------------|
| Protected Streams | | Protected Lakes | |
| Agricultural | | Sections | |
| Forested | | Township | |
| Transitional | | Image | NAIP 2003 Color Aerial |
| Tributary | | Shoreland Management Zone: | 1000' from lakes - 300' from streams |



Clearwater County
Environmental Services